



Aaron Cohen Associates Ltd
159 Teatown Road
Croton-on-Hudson, NY 10520

Tel: 914-271-8170
Fax: 914-271-2434
aca2024@acohen.com
www.acohen.com

STE. GENEVIEVE PUBLIC LIBRARY

LIBRARY CONSULTANT PROGRAMMING REPORT

November 4, 2024

TABLE OF CONTENTS

CURRENT SPACE, FUTURE GOALS..... 4
SURVEY..... 7
LIBRARY PRIORITIES14
 Review..... 14
 Community Needs15
FINANCIAL AND STRATEGIC INSIGHTS16
 Access to Information and Independent Learning Services 16
 Analysis of Library Landscape..... 16
 County Census and Tax Data..... 16
 Budget Constraints and Future Projections.....17
 Architectural Plans and Community Needs.....17
 Strategic Considerations 18
FACILITY BREAKDOWN 20
 Library Programming21
 Library Entrance..... 22
 Long Term Recreation Center..... 23
CONSULTANT REVIEW AND COMMENTS 25
 Library Entrance..... 25
 Visualization of an Entrance..... 26
 Library Entrance..... 27
 Ste. Genevieve Recreation Center Entrance 28
 Circulation Desk 29
 Staff Processing Area 30
 Community Space.....31
 Computer Area 32
 Library Print Collection..... 33
 Crafts Area 34
 Children’s Area..... 35
 Teen Room..... 36
 DVD and the Future 37
 Ste. Genevieve Library Recreation Center Entrance 38
 Check out Area.....39
 Public Service Desk.....40
 Meeting Room..... 41
 Seating Area..... 42
 Ste. Genevieve Learning Tree 43
 Promoting Titles/Book Collection 44
 Games and Teen Collection.....46
LIBRARY VISION SKETCHES 47
VISUAL SCAN GENERAL NOTES 63
 General notes from Visual Scans 63
VISUAL SCAN DOCUMENTATION 65
 Background of Visual Scan Focus Groups 65
 VISUAL SCAN 1 66
 VISUAL SCAN 2..... 67
 VISUAL SCAN 3..... 68

PRE-DESIGN WORKSHOP 69
 Workshop Overview 69
 Future Needs 69
ALTERNATIVE LOCATIONS..... 77
 50 Jefferson Street..... 78
 55 3rd street..... 78
COUNTY MAP; LIBRARY SERVICE AREA..... 80
 Ste. Genevieve City Map..... 81
 Current Location of the Library 82
 Library Service Option 83

CURRENT SPACE, FUTURE GOALS

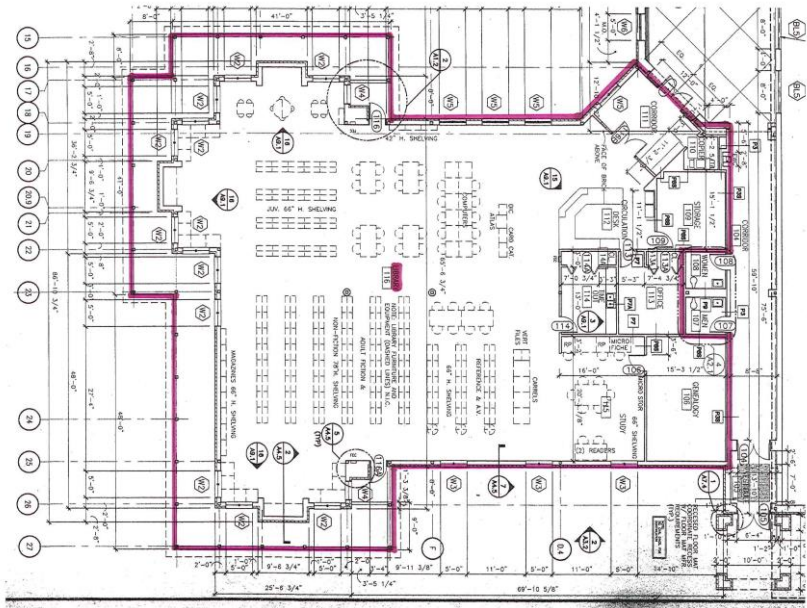
Building on the extensive research and observations, the planning work outlined here aims to enhance both the space and services of Ste. Genevieve County Public Library. The qualitative approach includes a thorough review of current library operations, followed by the development of innovative design concepts for potential space optimization.

The community can focus on these strategic improvements. Together we aspire to create a more functional, inviting, and adaptable library environment that better serves the residents of Ste. Genevieve County.

Current Space

The Ste. Genevieve County Public Library is 4,850 gross square feet. The current location, built in 2000 as part of the initial Community Center project was built in relation to being part of the Ozark Regional Library system and not its own standalone library. However, the entrance is concealed.

According to ACA's standards, the town should provide a minimum of 1 square foot per capita. However, July 7, 2023 census reports that there were 18,642 residents in Ste. Genevieve. The current configuration creates a loss of approximately 13,792 square feet: in other words, the space that is actually available to the community is approximately 26 percent, when it should be about 70 percent minimum.



Setting Future Goals

During the initial visit, we listened to the library board, community members, library staff, volunteers and community stakeholders. We held a series of Visual Scans with concerned citizens who are seeking to improve Ste. Genevieve as a destination and the library as a community resource for local folks; it is part of the fabric of the city neighborhoods and county life. The process was a dynamic dialogue with community representatives that provided a variety of insights.

The following goals were identified by the project team:

- Consider the possibility of a building renovation.
- Generate support for a public library service plan with modern services and programs.
- Develop a library building(s) that is big enough for reading, writing, creating, digital work, homework, casual reading, etc.
- Improve the Library's ability to offer cultural and educational programs.
- Offer more programs and meeting spaces (indoor and outdoor event space, use gym, etc.).
- Investigate whether the entrance can be improved; the porch, parking, traffic and access.
- Realign the main entrance to assist the handicapped and utilize the courtyard.
- Create a staff space plan to improve library circulation, program development and management.

Rethink the children's area, separate space for Storytime programs, events and tutoring services. Create more space for adult non-fiction (art and local artist) and genealogical research.

- Create more space for digital literacy; audio book and ebooks marketplace, book hub, etc.)
- Improve access to Library Entrance (e.g. space between the Gym, Recreation Center and Library).
- Create pedestrian access to Library Porch.

The initial meetings have brought forward several important questions. Our focus will be on enhancing the accessibility, comfort, and utility of both the Ste. Genevieve Library and the Recreation Center to better serve our community.

We aim to expand educational and cultural experiences within Ste. Genevieve County by introducing a variety of events such as educational workshops, book sales, art exhibitions, food festivals, and eBook parties. Additionally, we will examine the feasibility and prudence of utilizing the Recreation Center Gym as an extended library space. This expansion could potentially create a versatile area for meetings, summer reading programs, and book sales. Moreover, we are keen to explore how the library's current funding limitations impact access to its services and resources, and what steps might be taken to mitigate these constraints. Our collaborative efforts, supported by comprehensive data collection, community surveys, and focus groups. Here we strived to address the following:

- How can the Ste. Genevieve Library and the Recreation Center be made more accessible, comfortable, welcoming and useful?

- How can we expand educational and cultural experiences in Ste. Genevieve County (ex. educational events, book sales, art, food, and ebook parties and programs)?
- Is an option to expand into the Recreation Center Gym affordable and/or prudent?
- Could the Gym area become a meeting place, summer reading center?
- How does the library's lack of funding impact access?

The following pages summarize the group meetings, Visual Scan[®], and discussions with community stakeholders, facilities planning committee and library board and staff. It is the first step in a process in which we will discover how to meet both space and service needs within the newly envisioned Ste. Genevieve Public Library.

SURVEY

In January 2024, a survey was conducted to assess the needs and preferences of the Ste. Genevieve County community regarding their public library services. 188 individuals responded, providing valuable data that will guide future improvements and strategic planning for the Ste. Genevieve Public Library.

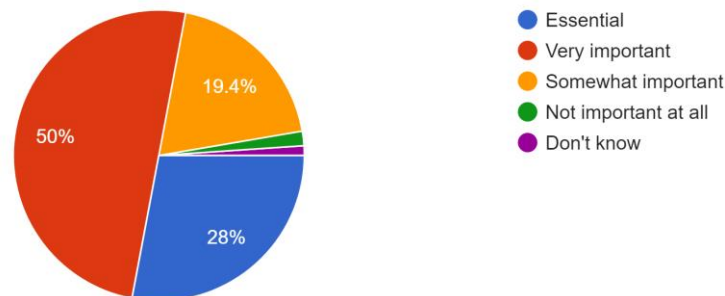
Key Survey Questions and Insights

- **Importance of Library Services**

- **Question:** How important are library services to you in general?
- **Insight:** Revealed that the majority value library services as essential or very important, underlining the library's critical role in the community.

2. How important are library services to you in general?

186 responses



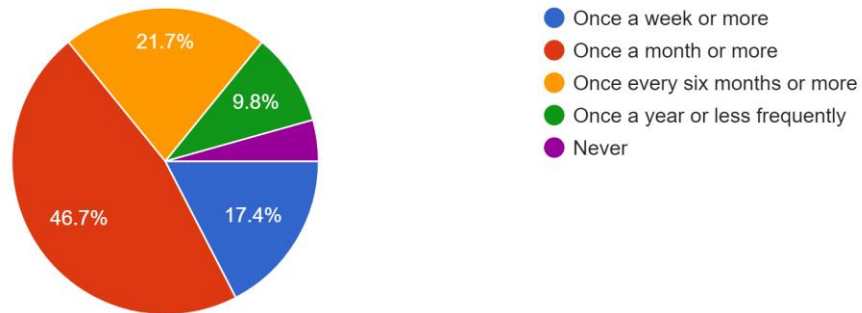
- 73% told us the library was essential and very important.

- **Frequency of Library Visits**

- **Question:** How frequently do you visit the Ste. Genevieve County Library?
- **Insight:** Provided data on library footfall and engagement frequency, highlighting how often patrons use the library.
- **NOTE: 68.4% Visit the library once a month or more.**

3. How frequently do you visit Ste. Genevieve County Library?

184 responses



- **Visits to Other Libraries**

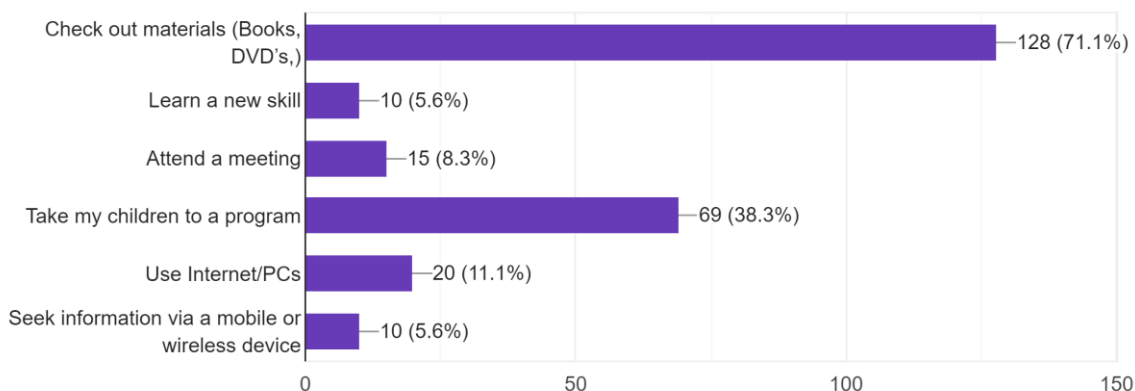
- **Question:** Do you visit other libraries? If so, which ones?
- **Insight:** Identified frequently visited alternative libraries, showcasing areas where Ste. Genevieve could improve to retain library users.
- **NOTE:** 72% do not use any other libraries in the area.

- **Main Reasons for Using a Library**

- **Question:** The main reason that I use a Public Library is to:

5. The main reason that I use a Public Library is to:

180 responses

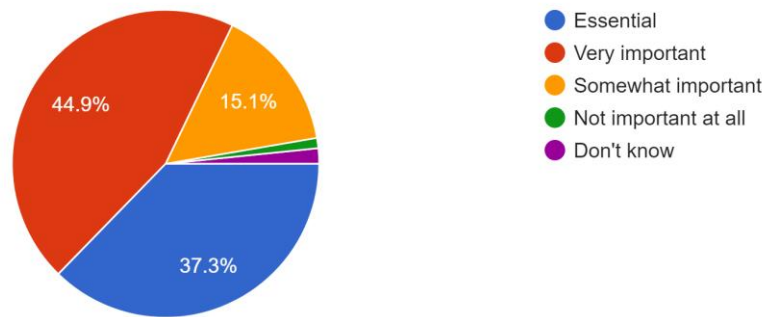


- **Insight:** The library is changing its services. This survey showed diverse uses, such as checking out materials, attending programs, seeking information, and using computer/Wi-Fi services.

- **NOTE: 46.6%:** take a child to a program and/or attend a meeting. This illustrates the need for more meeting spaces.
- **Importance of Local Events and Programs**
 - **Question:** How important are local events and programs to the Ste. Genevieve County Library?
 - **Insight:** Emphasized the community's strong interest in local events and programs, guiding future programming decisions.

6. How important are local events and programs to the Ste. Genevieve County Library?

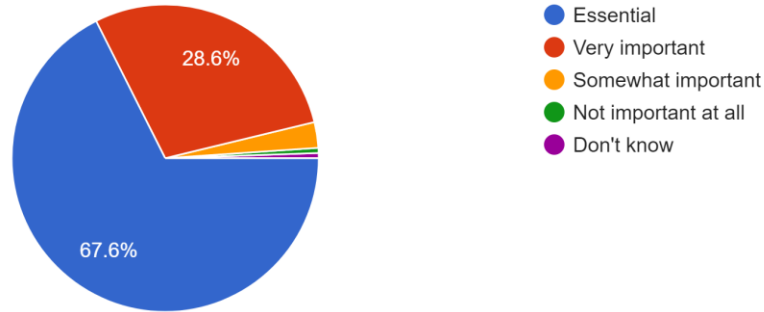
185 responses



- **NOTE: 82.2% believe the library is critical to support local events and programs.**
- **Importance of a Full-Service Library**
 - **Question:** How important is it to have a full-service library in Ste. Genevieve?
 - **Insight:** Highlighted the community's need for comprehensive library services and the potential areas for upgrade and expansion.
 - **NOTE: 96.2% want the county to provide a full-service library.**
 - **NOTE: the space deficiencies of almost 15k square feet (according to ACA library standards).**

7. How important is it to have a full service library in Ste. Genevieve?

185 responses

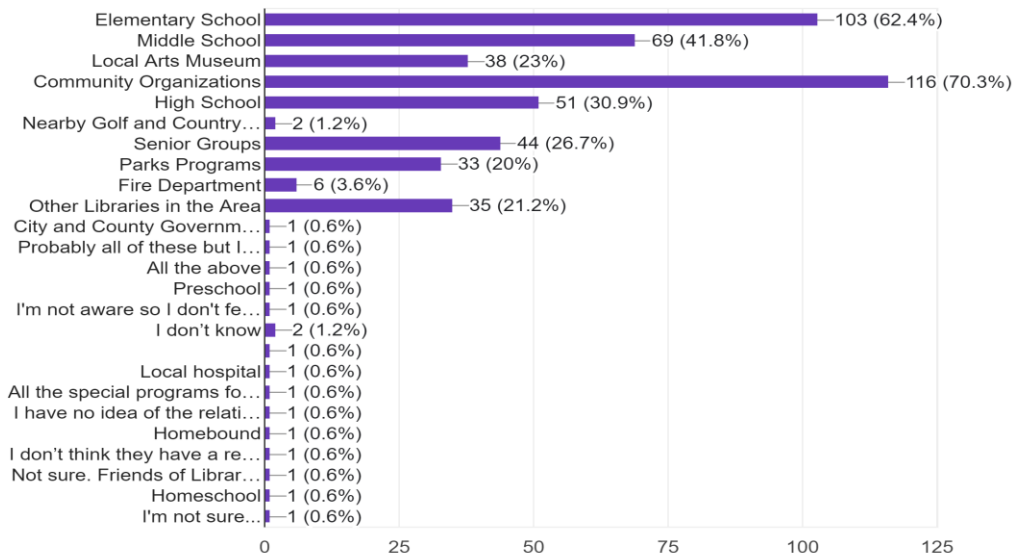


• **Library Relationships**

- **Question:** Which of the following do you feel your library has a strong relationship with?
- **Insight:** Identified strong existing partnerships and suggested areas to strengthen community ties, such as schools and local organizations.
- **NOTE: the library supports education and independent learning. It is a vital part of the community.**

8. Which of the following do you feel your library has a strong relationship with?

165 responses

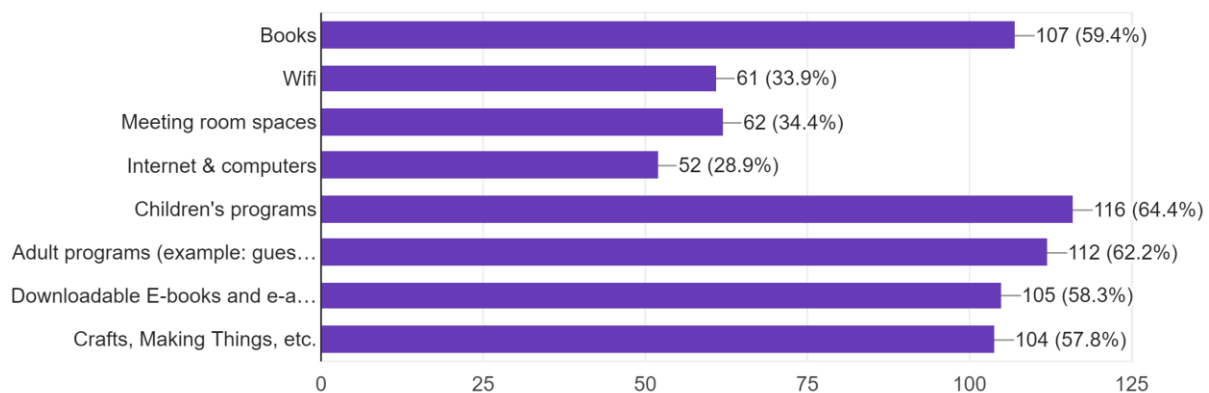


- **Desired Service Improvements**

- **Question:** If we were to improve the local library in Ste. Genevieve County, which of the following services should be included?
- **Insight:** Guided potential enhancements, showing demand for more meeting spaces, interactive zones, collaborative workspaces, enhanced Wi-Fi, and comfortable seating.
- **NOTE: Children’s and Adult programming ranks the highest.**
- **NOTE: Downloadable eBooks are the same percentage as books.**

9. If we were to improve the local library in the Ste. Genevieve County, which of the following services should be included?

180 responses

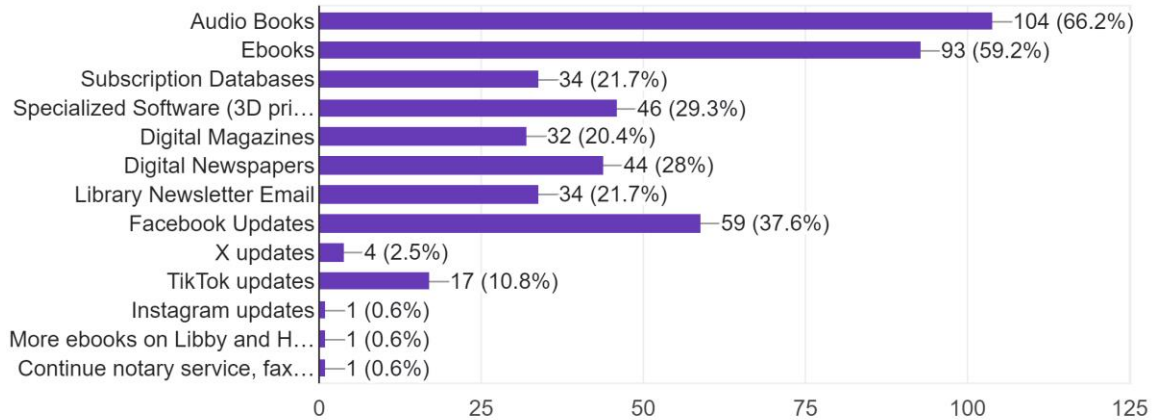


Preferred Digital Services

- **Question:** If you don't access traditional library resources, what digital services do you think we should offer?
- **Insight:** Explored the rising demand for digital services like eBooks, online courses, and other electronic resources to complement traditional offerings.
- **NOTE: we sometimes confuse ebooks and audio books. They are accessible through library services remotely.**

10. If you don't access traditional library resources, what digital services do you think we should offer?

157 responses

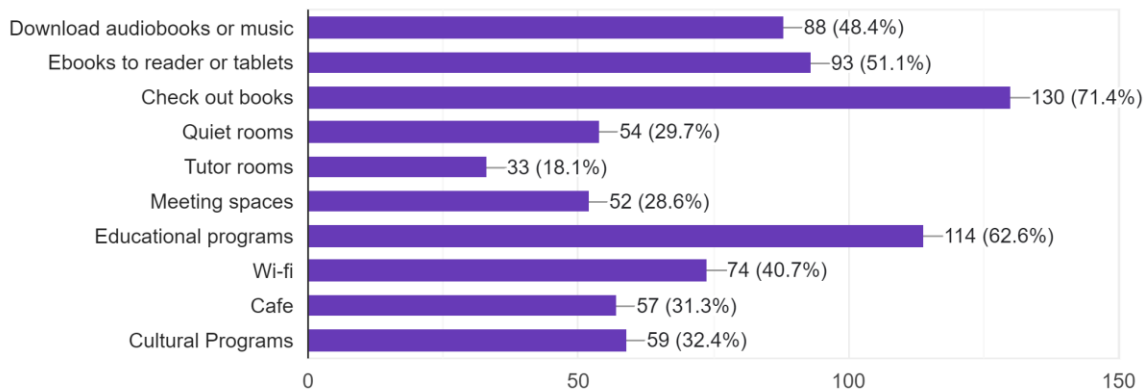


• **Interests in Library Services**

- **Question:** What is your interest in the following library services?
- **Insight:** Highlighted specific interests in educational programs, cultural events, and technology access, providing direction for service expansion.
- **NOTE:** checking out books is the most popular. However, educational programs were at 62.6% and cultural programs were 32.4% - again indicating a need for more meeting spaces.

11. What is your interest in the following library services?

182 responses

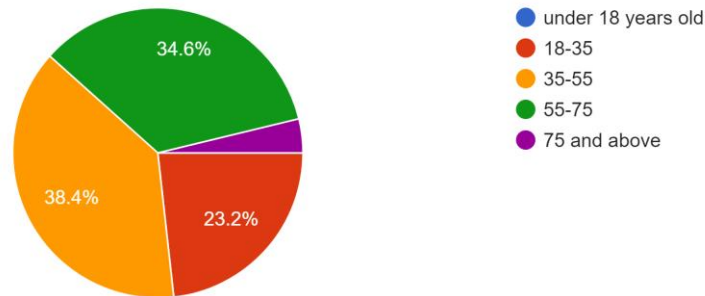


- **Age Demographics**

- **Question:** What is your age?
- **Insight:** Helped understand the engagement levels of various age groups, ensuring services meet the diverse needs of the population.

12. What is your age?

185 responses

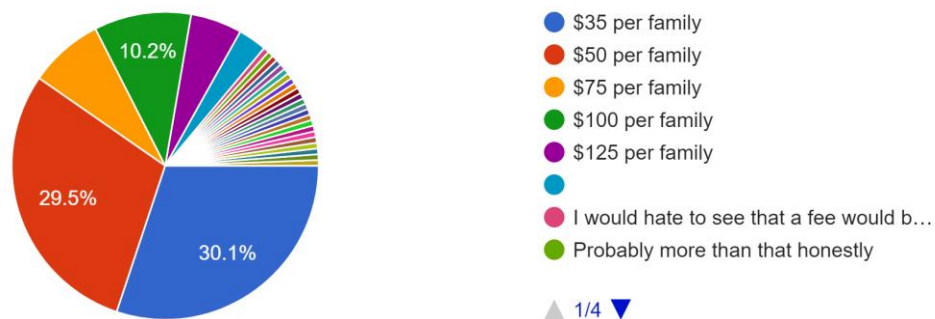


- **Value of Library Without Tax Support**

- **Question:** If the library wasn't supported by taxes, how much would it be worth to the community?
- **Insight:** Assessed the perceived economic value of the library, reflecting its essential role in the community infrastructure.

13. If the library wasn't supported by taxes how much it would be worth to the community?

166 responses



- **NOTE:** the majority of the community will pay \$35 per family for library services. This illustrates that the current budget falls below the per capita needs of the community.

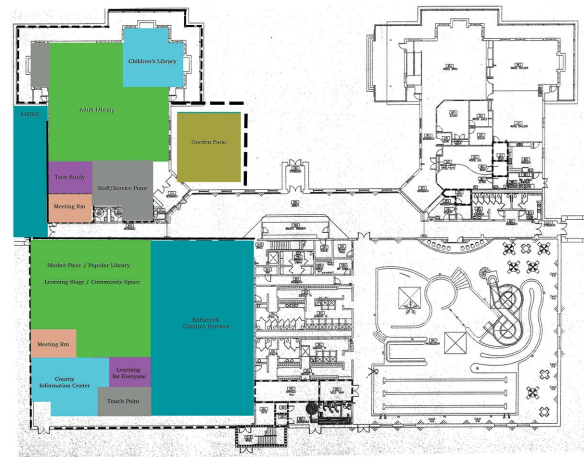
LIBRARY PRIORITIES

Review

Library Priorities / Visual Scan[®]

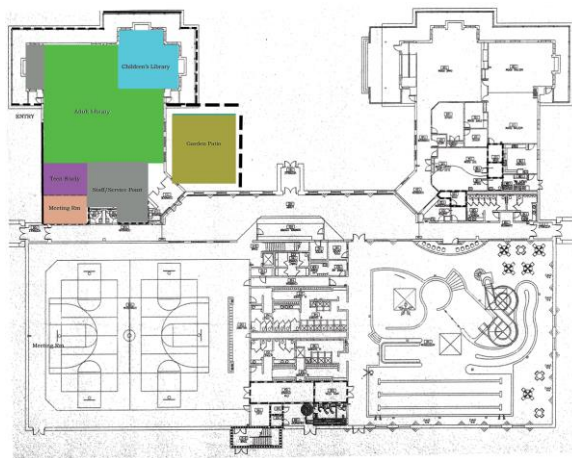
This document represents an open-ended conversation we had with the community. They helped us assess options to improve the Ste. Genevieve Public Library. To build a consensus, we asked participants to share their vision and exchange ideas in open dialogues.

The consensus is clear: the Ste. Genevieve Public Library located within the Recreation Center is outdated. While the existing building functions well as a gym and pool, the library space and common areas are significantly underutilized. The location faces traffic-flow challenges, though it benefits from ample parking.



Currently, the Recreation Center features a dedicated basketball gym that serves its intended purpose. However, the library lacks a public meeting space. The concept of creating an activity center to provide additional meeting spaces has not yet been explored.

Furthermore, the exterior porch and façade of the Recreation Center boast a historic architectural charm that should be preserved. For example, the courtyard can be incorporated into the future design plans. Addressing space planning and building utilization issues will be key to transforming the Recreation Center into a more functional and inviting community space.



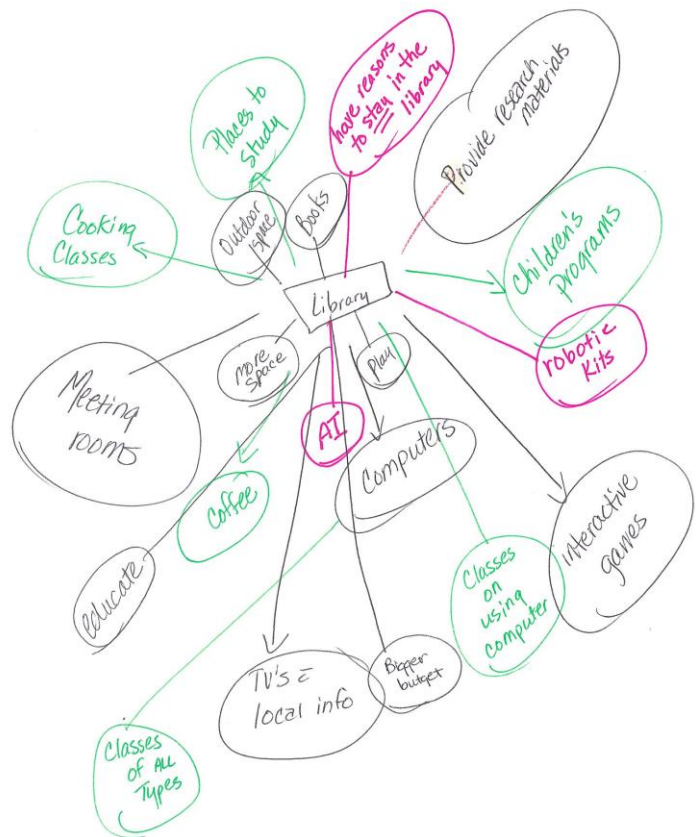
Community Needs

Alexander Cohen consulted with the Ste. Genevieve Public Library Board, including Jean Johnson (President), Melissa Otto (Vice President), Robin Reynolds (Treasurer), Robert Bach (Secretary), and Cindy Nugent (Member-at-Large). During these consultations, the board identified several infrastructure priorities: creating additional space for parents and children, developing an enclosed outdoor space in the courtyard, installing a new entrance and restrooms near the parking lot, and introducing a self-contained sign with entrance indicators.

The City of Ste. Genevieve, founded in 1735, and the County shares the library service. Interestingly, the library pays rent to the county for its building, a unique arrangement highlighted by the consultant at the onset of the study. Despite limited space, computers, collections, meeting rooms, and reading areas, the current library environment enables the county to provide excellent services.

The City of Ste. Genevieve Library can leverage this planning opportunity to address the downtown community's evolving needs. There used to be a library downtown. The children walked to it after school. This is an opportunity to establish new learning spaces for children, expanding teen areas for after-school programs, and creating dedicated areas to promote local art, writers, musicians, and historians. They noted the following infrastructure priorities:

- More space for parents and children.
- Enclosed outdoor space in the courtyard.
- New entrance and restrooms near the parking lot.



FINANCIAL AND STRATEGIC INSIGHTS

Access to Information and Independent Learning Services

Ste. Genevieve Public Library stands among 21 libraries in the state that do not qualify for state aid. The current population of 18,642 surpasses the combined populations of 19 other libraries lacking state aid, positioning us uniquely to advocate for greater utilization of resources and services.

Libraries are exceptional investments for communities. They serve as vital hubs for education, information, and social connection, offering numerous benefits:

- **Educational Opportunities:** Libraries provide free access to a vast array of educational resources, including books, online databases, and digital literacy programs.
- **Economic Benefits:** They contribute to the local economy by offering job search assistance, skill development programs, and business resources.
- **Community Engagement:** Libraries host events, workshops, and community meetings, fostering a sense of community and belonging.
- **Inclusive Services:** They serve diverse populations, providing access to resources and services for all, regardless of age, socioeconomic status, or background.

Analysis of Library Landscape

Most non-qualifying libraries serve populations under 1,000, relying heavily on volunteers and minimal staff. The Ste. Genevieve County Library is a rural system of resources. Although operating similarly through county tax support, this library faces challenges without state aid, missing out on potentially 8-10% of the budget and valuable grant opportunities.

County Census and Tax Data

Serving a population between 15,000-29,999, the assessed valuation significantly exceeds the median. This figure is helpful in understanding the potential for increased tax levies and funding.

- **Current Tax Challenges:** The 2017 property tax rollback to \$0.045 per \$100 significantly hampers the ability to save and expand.
- **Even with the high valuation,** a portion amounting to \$288,070,960 is under appeal, further complicating budget planning.
- **Potential Tax Levies:** Exploring higher tax rates could unlock substantial funding, with projections showing significant revenue increases at various levy rates.

Budget Constraints and Future Projections

Since 2019, the budget has seen a 35% increase, averaging a 5% annual rise, projecting a budget of \$560,401 by 2028. However, unresolved appeals and intergovernmental agreements cap the funding, requiring conservatism in financial planning.

- **State Aid and Federal Grants:** The current tax rate of \$0.045 per \$100 is below state averages, resulting in a loss of \$32,237-\$34,728 annually in state and federal funds. This loss equates to 7-8% of the overall budget.
 - **These funds can be used to support community volunteers**
 - **These funds can be used to provide homework help resources**
- **Historic Grants and Aid:** In 2017, the last state aid was \$2,185.90. Comparative state aid figures for similar libraries highlight the potential missed opportunities for financial support.
 - **The state does not provide enough support for the library.**
 - **The county needs to support local folks and rural families.**

Architectural Plans and Community Needs

In discussions, this document supports feasible improvements. We understand that the library can provide outreach services, such as, the locker system in Bloomsdale. Our team has explored available properties in Ste. Genevieve. Each property provides an opportunity for new investments into the families, high school, middle and elementary school children. The adults and seniors would benefit from a location downtown.

- **Library Size:** Currently under 5,000 square feet, we need expansion to meet community needs, ideally 27,963 square feet for a population of 18,642, with a projected cost of \$11,186,400. (1.5 sq. ft. per capita)
- **Recreation Building Upgrade:** Adjacent to the library is a typical basketball gym with a small amount of seating. This generally ranges between 7,000 and 9,000 square feet.
 - **Basketball Court Dimensions:** A standard high school basketball court is 84 feet long and 50 feet wide, totaling 4,200 square feet.
 - **Runoff and Buffer Space:** Allowing safety and movement around the court, you'll need additional space. This generally adds around 1,500 to 2,000 square feet.
 - **Seating:** Small bleacher seating for spectators might require an additional 1,000 to 2,000 square feet, depending on the specific seating layout and capacity.
- Putting all these factors together, the library can expand with a new concept for seating. It might be a good strategy to add approximately: 7,000 to 8,000 square feet.

Strategic Considerations

To ensure the library's growth and sustainability, it is imperative that we advocate increased City and County Library support. Here are the key reasons why we need to increase funding and explore higher tax levies:

1. Enhancing Library Services

- **Expanded Offerings:** Additional funding will allow the library to expand its range of services, including digital literacy programs, technology access, and educational resources.
- **Modernization:** Upgraded facilities and technology will keep the library relevant in the digital age, meeting contemporary user expectations.

2. Addressing Community Needs

- **Inclusive Access:** Increased funding can support programs and services that cater to all community members, including underserved and marginalized populations.
- **Customized Programs:** With more resources, the library can develop targeted programs based on community needs, such as job search assistance, health literacy initiatives, and cultural events.

3. Infrastructure Improvements

- **Facility Upgrades:** Higher tax levies can finance necessary renovations and expansions, creating welcoming and functional spaces for all users.
- **ADA Compliance:** Ensuring the library meets accessibility standards requires investment, making it accessible to individuals with disabilities.

4. Economic and Social Impact

- **Economic Growth:** Libraries contribute to local economies by supporting workforce development, small businesses, and entrepreneurship through access to information and technology.
- **Community Hub:** Libraries serve as vital community centers, fostering social cohesion and providing safe spaces for individuals to gather, learn, and engage.

5. Leveraging External Funding

- **State and Federal Grants:** Increasing local funding and tax levies strengthens the library's eligibility for state and federal grants, which can further enhance its financial resources.
- **Partnership Opportunities:** Adequate funding allows the library to form partnerships with other organizations, amplifying its impact and reach.

6. Long-Term Sustainability

- **Financial Stability:** Higher tax levies ensure a stable financial foundation, reducing reliance on unpredictable funding sources and enabling long-term planning.
- **Resource Allocation:** A robust budget allows for strategic allocation of resources, enabling the library to address pressing needs while planning for future growth.

8. Expanding Outreach Opportunities:

By increasing our outreach efforts, we can significantly enhance the library's ability to connect with the community. Currently, dedicated library staff makes visits to half of the schools in the county, providing valuable resources and fostering a love of reading. Looking ahead, the library is excited about the potential to extend this outreach to local daycares and other community centers, ensuring that everyone has access to the rich resources and support the library offers. While their current staffing levels limit some of these efforts, they are committed to exploring new strategies and partnerships to broaden the impact and reach more members of our community.

This version focuses on the positive prospects of expanding outreach and acknowledges the current efforts while looking forward to future opportunities.

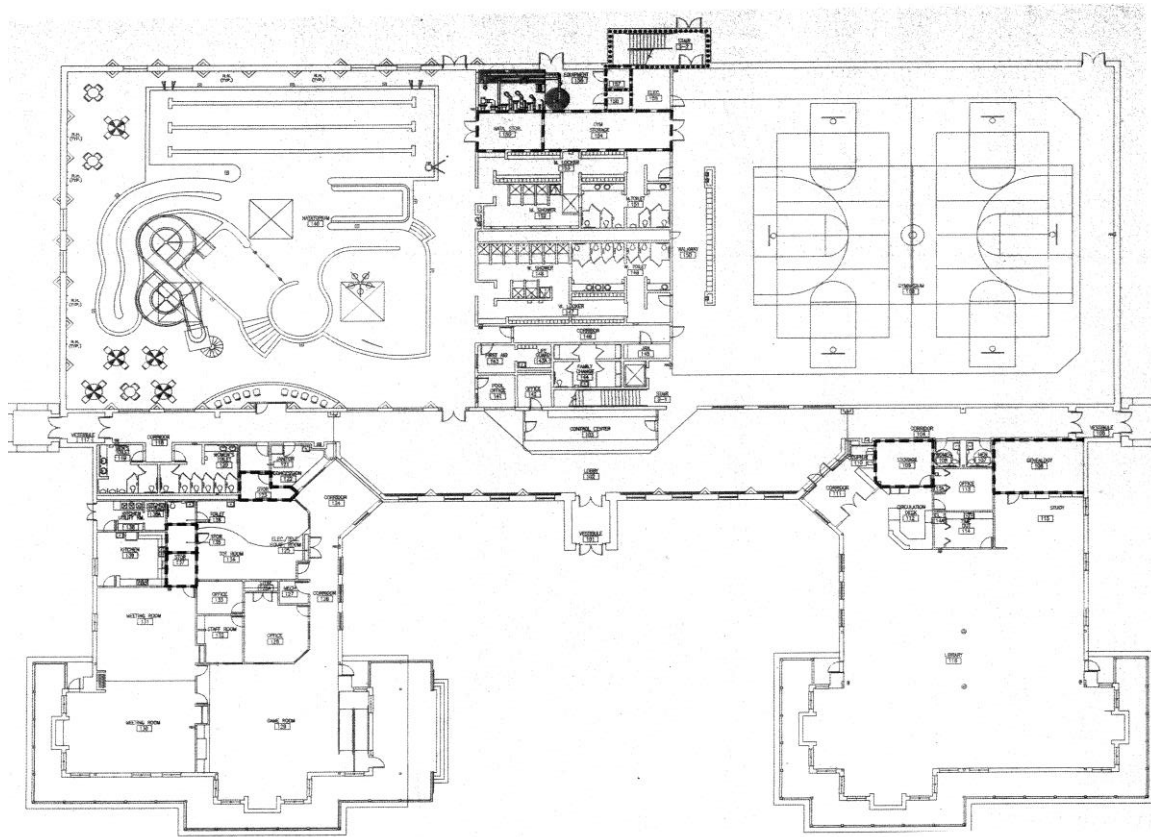
7. Community Investment

- **Public Support:** Advocating for more funding and higher tax levies is a testament to the community's commitment to its public library. It reflects the value placed on life-long learning, literacy, and cultural enrichment.
- **Legacy Building:** Investing in the library today ensures that it remains a valuable resource for future generations, preserving its role as a cornerstone of the community.

FACILITY BREAKDOWN

The Space Planning Study for the Ste. Genevieve Public Library is a report crafted to guide the library's evolution into an even more accessible, inclusive, and resourceful community haven. As we seek to address both current and future needs, this library planning study emphasizes our commitment to continually enhancing the ways we serve Ste. Genevieve's diverse and dynamic population.

The impetus for this study arises from the library's dedication to community-centered growth. By engaging with residents, educators, local businesses, and various stakeholders, we thoroughly understand the multifaceted needs of our community. The insights gathered from extensive community feedback sessions, facility tours, surveys, and focus groups provide the foundation upon which this report is built.



This document not only highlights the strengths and areas of improvement identified by community members but also sets forth strategic recommendations for spatial reorganization, technological upgrades, innovative programming, and sustainable practices. Our goal is to ensure that the Ste. Genevieve Public Library remains a vibrant and essential institution, capable of adapting to future demands while preserving the core values that define its mission.

By reading this report, stakeholders and community members will gain a deeper understanding of our methodology, findings, and proposed actions to create a more welcoming, comfortable, and meaningful library experience for everyone in the community. We invite you to delve into the detailed examinations and visionary plans outlined in this study as we embark on this transformative journey together.

Library Programming

This approach provides readers with a clear understanding of the purpose and importance of the library space planning study while underscoring the county’s ongoing commitment to its community.

Here is a building program of the library’s needs. It details the space needs for the Ste. Genevieve Public Library. It is our goal to show how improvements could be made to better meet the needs of Ste. Genevieve residents.

On the following pages residences from the community toured the facility and discussed every aspect of the library and what they liked/disliked about it.

STE. GENEVIEVE LIBRARY PROGRAM AREA SIZE SUMMARY										
#	Department Name	Area Name	L.F. of Shelving	Seating	Staff	Room or Area NASF	Subtotal NASF	GSF	COLOR	
1. Retail Space / Library Bookstore Area								1,800		
101		Friends Space TBA (Coffee or other)				1,000			Social Space	
102		Bookstore Display and Counter Area					500			
104		Bookstore Seating Area		4			100			
105		Bookstore office/storage/workroom					200			
2. Community Space								1,110		
201		Help Desk/Reception					100		Collaborative Space	
202		Group seating		6			150			
203		Open Group Commons/Flr Space					200			
204		Flexible Table Seating					300			
205		Lounge Seating		8			350			
3. Shared Meeting Room								1,625		
301		Meeting Rm - Adult Program Area		55			1,375		Presentation Space	
302		Meeting Rm - Kitchennette and Storage					250			
4. Touch Point/Circulation								340		
401		Circulation desk(s) w/Security				1	200		Touch Point	
402		Self Check-in/Check-out Stations					80			
403		Pick-up Stations, Shelving (low)					60			
5. Market Place / Popular Library								1,350		
501		Literat releases Paperbacks (new books)	140				90		Collaborative Space	
502		Stand-Up Computer Bar		8			210			
503		Info Commons/Flr gathering space		6			210			
504		Flexible Table Seating					350			
505		Lounge Seating		8			280			
506		Parade/Info Collection B. Seating		5			210			
6. Reference/Information Center								2,880		
601		Touch Point - Ref. Desk & MF mach.		10			350		Reflective Space	
602		Information Commons (public computer seating)		10			350			
603		Printer/Copier/Scanner area					200			
604		Computer Literacy Room for 12		12			360			
605		Reference Collection, Shelving	8				8			
606		Reference Seating		8			200			
607		Group Study/Meeting Room for 6 (1)		6			150			
608		Quiet / Silent Study		8			320			
609		Flexible Study Space-movable barriers		6			150			
7. Adult Collection and Seating								1,480		
701		Touch point/Service Desk							Collaborative Space	
702		Non-Fiction, Special Collection Shelving	500				450			
703		Fiction Collection Shelving	500				450			
704		Media shelving	130				130			
705		Lounge Seating		8			240			
706		Flexible Table Seating		5			210			
8. Learning for Everyone / Maker Space								450		
801		Hands-on Work Center		15			450		Presentation Space	
9. Children Services								1,392		
901		Program Room Storage/Sink					200		Reflective Space	
902		Juvenile Fiction shelving	100				70			
903		Juvenile Non-fiction shelving	60				42			
904		Juvenile Media shelving	60				60			
905		Juvenile Computer Seating		12			300			
906		Table Seating		4			100			
907		Baby Pen and Stroller Parking					120			
908		Children's Hub / Story Hour (Circle)		30			600			
10. Young Adult Cube								400		
1001		YA Fiction/Nonfiction Shelving	50				35		Collaborative Space	
1002		YA Media Shelving	15				10			
1003		Media Productions Space		1			60			
1004		Flr Seating		10			300			
11. Library Administration								700		
1101		Director's Office			1		160		Staff	
1102		Reference Dept Head			1		120			
1103		Children's Department Office			1		120			
1104		Library Assistants			3		120			
1105		Part time Library Assistants			1		80			
1106		Office Storage					100			
TOTAL BUILDING			1,583	275	9		12,748	17,210		

Library Entrance

Ste. Genevieve is a beautiful place; one of the best small towns in America. The library needs a dedicated outdoor entrance into the library; the welcoming feel of the site is an example worth noting.



The only reason this entrance is not an A+:

1. Need to Construct a Ramp to meet ADA code.
2. Open up an entrance into the library.
3. No dedicated library signage on this side of building
4. This side could potentially be converted into a dedicated outside entrance

Rating=A
Current Condition=D

Long Term Recreation Center



Ste. Genevieve has a unique opportunity to transform and modernize its Recreation Center, creating a vibrant, multi-functional hub for the entire community. By designing a dedicated entrance to the library and upgrading the gym facilities, the County can

significantly enhance both accessibility and user experience. Imagine a County Activity Center that complements the library, offering a cohesive blend of fitness, recreation, and knowledge.

CONSULTANT REVIEW AND COMMENTS

Library Entrance



The entrance can be enhanced to improve access to the library.

The parking area is ample; and there is more parking in the back of the building.

The community should investigate redeveloping the pedestrian pathways in the recreation center and the library.

This picture illustrates how the library add a new children’s library in front part of the site. This may be a design option to pursue.

Rating=C

Visualization of an Entrance



Library Entrance



The entrance is integrated with the recreation center.

The signage is limited; there is not information to support community meetings and programs.

No library entrance is visible from the parking lot and street.

A larger sign could improve access to the library.

Rating=C+

Ste. Genevieve Recreation Center Entrance



The recreation center entrance could be more visually appealing; make it a gathering space for both, Library & Community Center users.

The library does not offer enough seating for adults.

The front - entrance could be integrated into a library welcome zone to enable people to move easily into the Recreation Center.

This entrance is not main thoroughfare. The entrance is accessible for people with disabilities; there are ample handicap spaces in the front of the building.

Rating=D

Circulation Desk



The desk design is traditional; patrons are confronted with the desk upon entry.

There is no security.

People need help with connectivity; computers, tech help, e-readers/e-books. Where is this done? A library thinking of the future needs to have this front and center for both patron interactions and tech assistance.

People get their couriered books from other libraries and check out books at this desk.

It is an opportunity to offer a personal touch, a helpful person who can answer questions.

The office area adjacent to this space, is a bottleneck.

Rating=C

Staff Processing Area

The library material from other libraries and returned items are processed in this small space. Worse yet, the roof access for the entire building resides in this storage area also, which eliminates even more potential storage space. Ste. Genevieve County Library was the 27th library to join the Missouri evergreen consortium. At the end of 2024 there will be 78.



This space will get overtaken with courier space and storage will be even more limited.

Storage is critical to improve staff work. It is limited. The library staff is restricted in this area. The storage room is located next to the desk.

Rethinking storage for the Recreation Center could provide benefits to create flexibility.

Grade=C

Community Space



The children's room is used by families, which creates noise issues. This is an example of how the Ste. Genevieve Public Library provides space for children, first. It is an excellent example of a thriving public library.

Often services are limited by the space provided by the library. The Ste. Genevieve Public Library has a limited amount of space for adults and groups to meet. This limits the library's ability to offer lifelong learning opportunities.

Rating=A- (for space utilization, not for acoustic control)

Computer Area



There are six computers located in the space next to the desk. During one visual scan, a user noted, “It is like a circus when the children in here and the circulation desk is busy. Improve this space!!”

There is limited seating in this area, because of the size of the library.

There is a need for more collaborative space.

Rating=D

Library Print Collection



People love to browse the shelving.

The collection of children's is well-used by the public.

Note technology is changing; more people are using online apps.

Review the size of the browsable collection(s) for the space allocated.

Space to browse children's books is too high and acoustic issues affect the entire library.

New shelving should be a top priority to have this space fit the comfort of the youth rather than the employees. Finding a good middle ground in shelving would be beneficial.

Rating=B

Crafts Area



Ste. Genevieve residents feel this space is adequate and want to improve it.

This is a good example of space constraints: the library needs more seats for collaborative work (tutoring, making things, programs to support reading, study, etc.) A crucial element to appeal to locals. The lack of quiet seating is a concern.

The porch is inaccessible.

The library needs more children’s spaces.

Rating=C

Children’s Area



Grade C+

The children’s library embodies the spirit of learning.

Create space to inspire the children to play and learn, space with books and games.

Story Time programs are hosted in the main area of the library making it loud and distracting during these times. This noise affects all of the patrons in the library.

Recently, the children’s library was updated. This illustrates that the library can improve services in a phased approach. On the other hand, it illustrates that the library needs more space to support digital literacy.

touch screens and interactive spaces need to be integrated into the design. Mix-furniture creates congested space.

Teen Room



Grade: B

It is critical to have space for teens. Usage statistics in the library have seen a dwindling use by patrons 13+ and there are 2 reasons for that 1. lack of dedicated space and 2. The location of the library itself, making walking to the library a difficult proposition. This space is also heavily used by adults utilizing the furniture for work. So there is truly not a space for only teens.

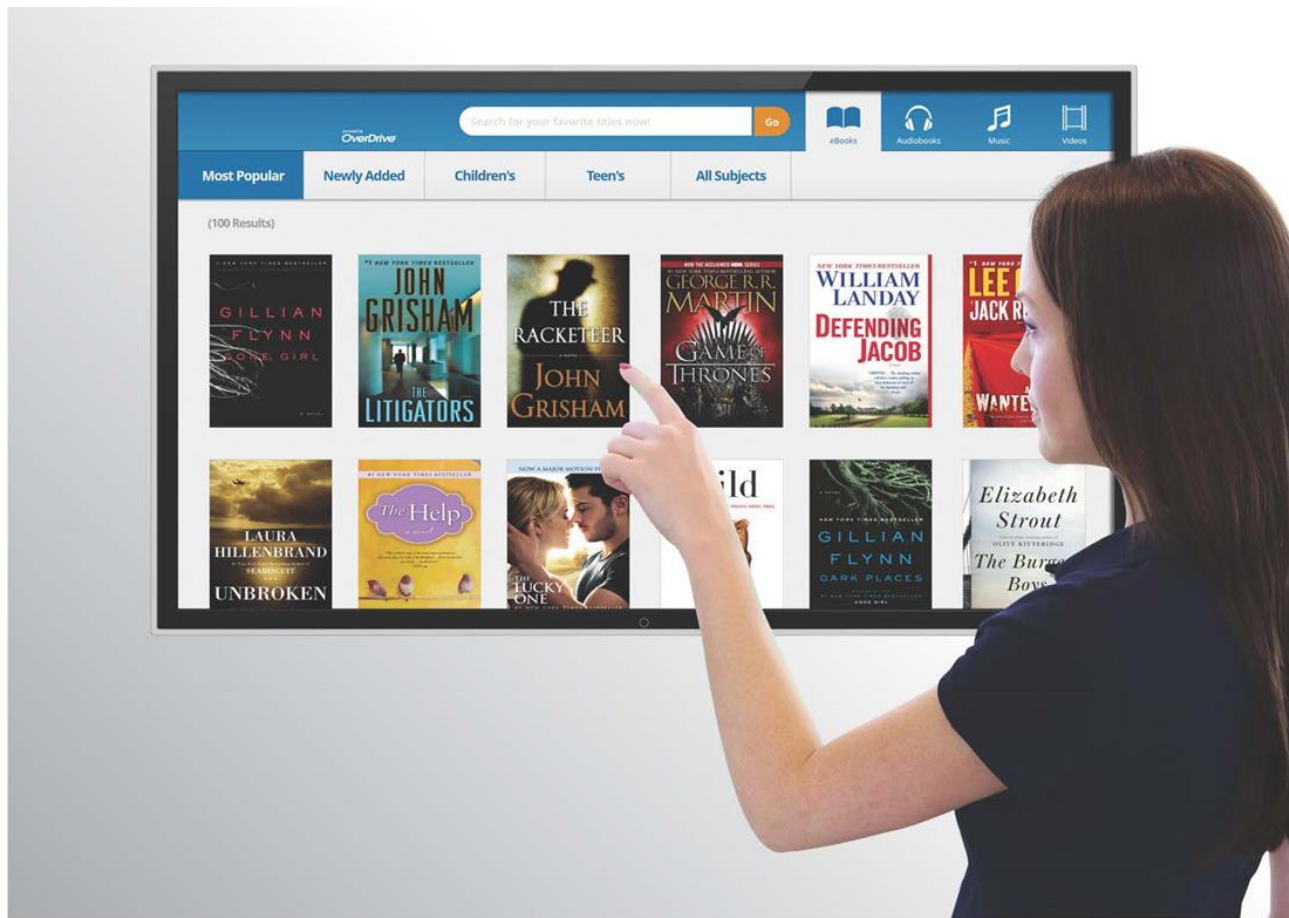
The teen area is next to the meeting room; teens need an area to study.

Most teens that use the library are seeking quiet space to read and study.

Tutors need spaces to support student success in the community.

DVD and the Future

The DVD's require security. Items are placed in boxes behind the counter. Patrons retrieve them from the desk. This is not only inefficient but not conducive to patron independence. In the future, patrons will use touch screens to browse digital collections. NOTE: Patrons are unable to utilize the self-checkout without having to seek a staff member thereby defeating the purpose. The library needs to be looking at other collection options that streamline the checkout process without keeping all DVD's behind the counter.



DVD browsing areas and other formats are part of a public library.

The library now provides Hoopla. How can this service improve?

How can we promote digital services?

Grade=B

Ste. Genevieve Library Recreation Center Entrance



The entrance needs to be updated.

The Recreation Center contains shared spaces – desk, meeting rooms, gym and pool.

The Recreation center space could be integrated into the library activity zones and areas. For example, the friends of the library could have a bookstore and café.

This entrance is a thoroughfare for anyone who goes through the Recreation Center and Library.

Rating=C-

Check out Area



This photo illustrates the lack of space for operations.

The library needs space for the staff and community to interact.

The library needs to redesign the public service desk with a design that features self service areas.

Grade=C+

Public Service Desk



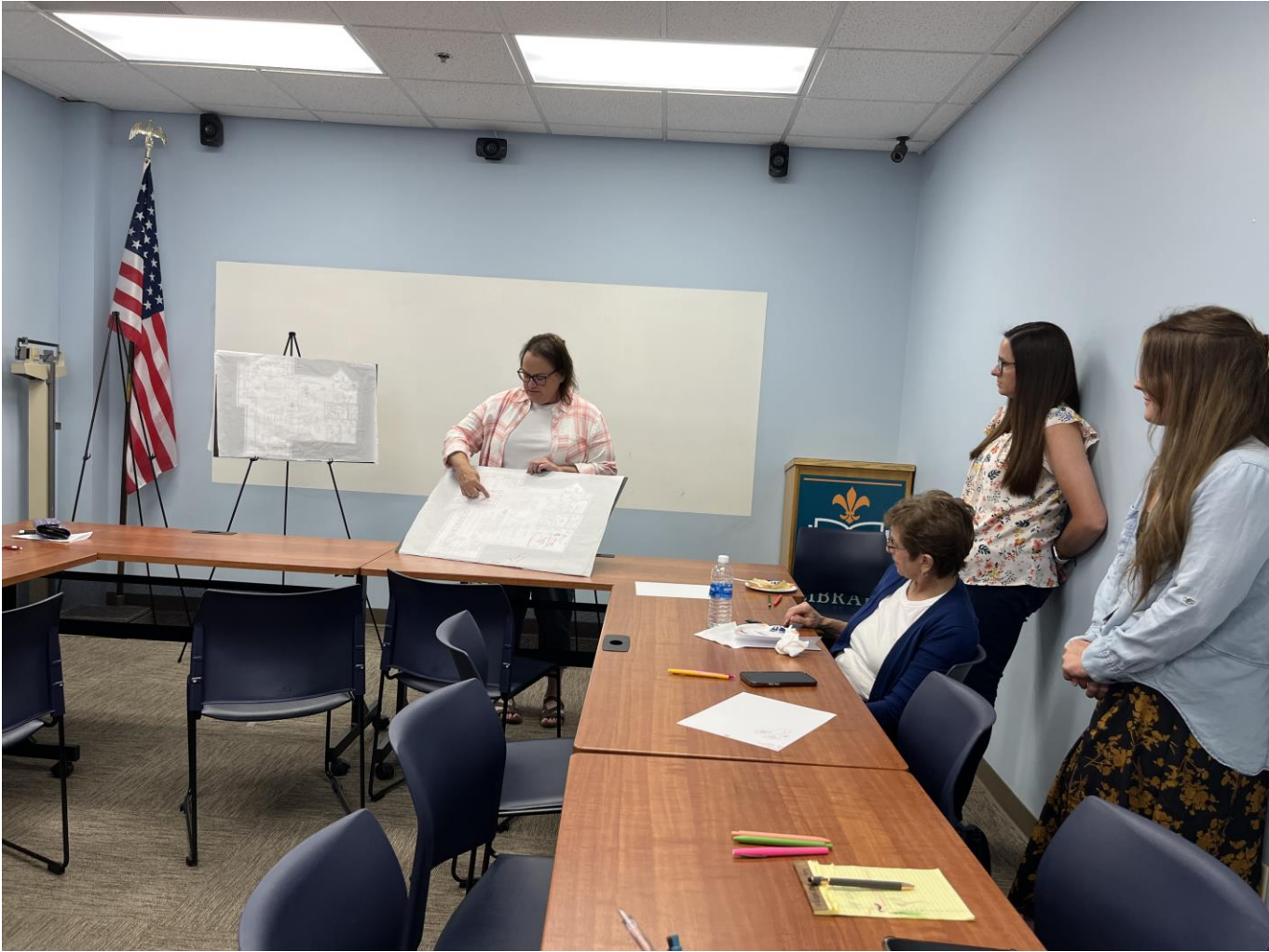
The desk is a community collaboration space.

The high desk protects the staff.

The library is small and the desk space can be reconfigured to support a digital resources and literacy bar.

Grade=C+

Meeting Room



The library utilizes the meeting room for a number of activities. This room is in high demand.

The library requires a larger and more flexible meeting room. This limits how effectively the library provides community programming.

The community wants a more accessible meeting rooms. The staff wants more accessible space for both making things and prepare for programs.

Grade=C-

Seating Area



The library provides access to Wi-Fi enabling the seating areas to be productive zones.

The teen area does not have a divider between the adult seating area and the teen literacy area.

The noise bleeds over from the children on the other side of the library, disturbing the adults.

Grade=C (e.g. carpet)

Ste. Genevieve Learning Tree



The library space for children activates learning in the library and allows imaginative play in many different areas of the space.

However, the space does not have acoustical controls to protect the space or the rest of the library from noise.

Children use this space to explore and have seen significant upticks in usage since it has been remodeled.

Is this a missed opportunity? Provide a learning stage in the recreation center. In the Gym?

Grade=B

Promoting Titles/Book Collection



The library bookshelves illustrate the potential to modernize the library.

The new fiction shelving is along the wall.

Overall, lighting needs to be updated to enhance the browsing experience. Track lighting can be used.

Interactive book spaces are a positive
What would make this more appetizing?

Grade=B

EXAMPLES ON THE NEXT PAGE:



Aaron Cohen Associates LTD.



45

12/4/2024

Games and Teen Collection



The library contains games and teen reading materials.

Meeting room is located at the back.

How can we improve the space/clutter?

More space is really required to properly give the items in this space its own area. Currently a 3D printer & Charlie Cart are being stored in this space. Making it feel “cluttered”

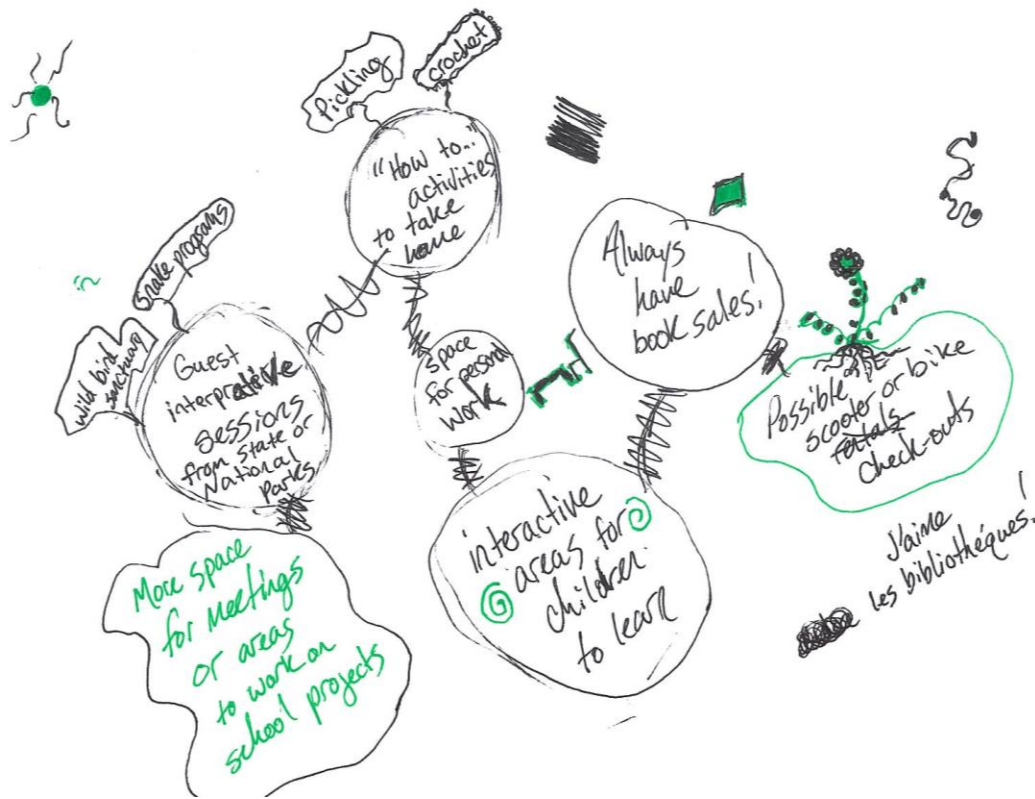
Additional shelving for teen materials is required.

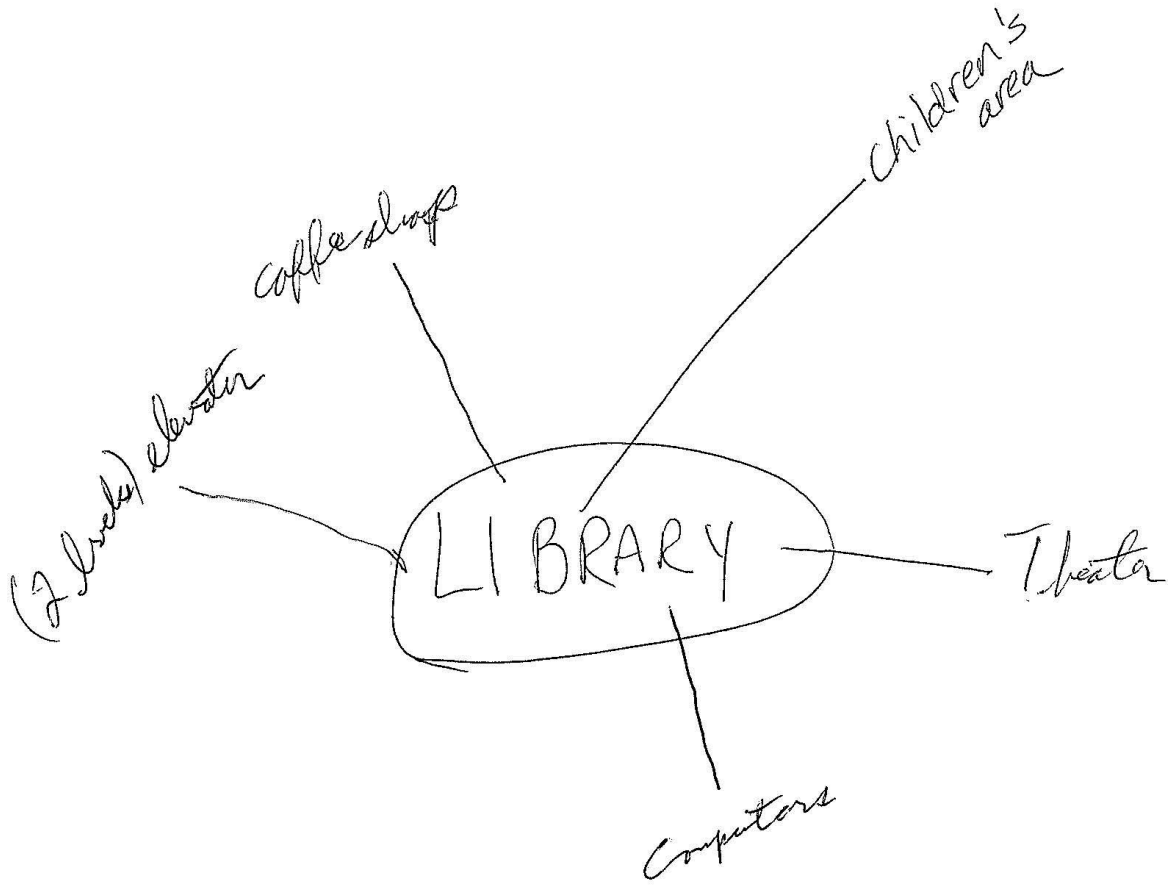
Grade=D (not enough space for community)

LIBRARY VISION SKETCHES

The Ste. Genevieve library user engagement, visioning, and characterization workshops were invaluable meetings. They helped us develop ideas for a library space plan. They ensured that the planning process was grounded in the real needs and aspirations of the community, leading to spaces that are functional, inclusive, and widely supported.

The following diagrams illustrate the value of the library. Below are sketches developed by the library board, which helped us characterize the library community. This exercise played a crucial role in shaping our vision for the library and its role within the community.





Crafts for all ages
Slide for kids
Quilting classes
Coffee area
Wedding area
Party area
Business classes
Movie nights w/ ^{all} the ~~stuff~~ stuff Family
more things for families to do together

Now
children's area
book sections
tech tables/pc based
big printer capability
access resources like
Hoopla + Libby
micro fishy/piche CP

Adding options
more programming?
more tech options
"creative thinking"
areas
↳ for solo
↳ for groups
(small)

- foundation is strong
 - community support is strong
 - young minds would benefit from more group learning options
 - adults would appreciate more options
- variety of programs

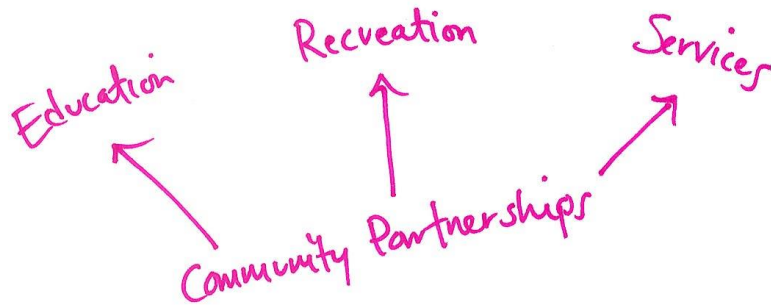
I like the (extended ed)
and (higher ed) concept -

it can be done in many
different formats
- with ~~AND~~ without "credits"
- distance learning and in house

What should the library do

~~Quit~~

- quiet space
- research
- interactive
- museum-like
- learning
- teen areas
 - video games, working on homework, studying together
 - board games, book recommendations from trusted people
- exchange of community resources - ^{garden} seeds, equipment, fishing poles
 - sharing/
 - checking out
- childrens programs
- play areas for children while parents study/
finish GEDs/work on homework
- outreach Bookmobile
 - books in other languages (spanish)
- help with resumes, job finding, housing



Youth programming

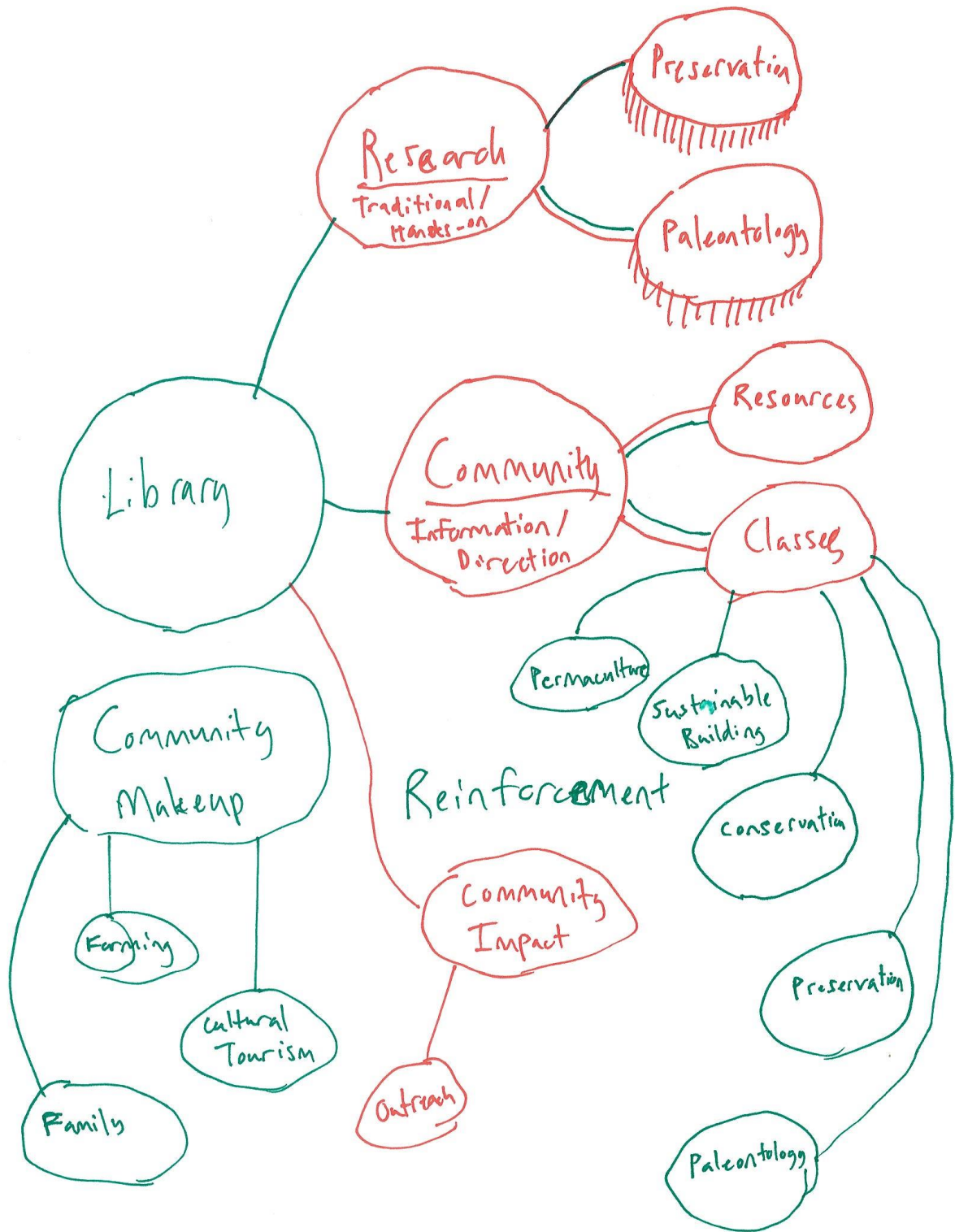
workspace for
remote workers

social hangout
for teens/young adults

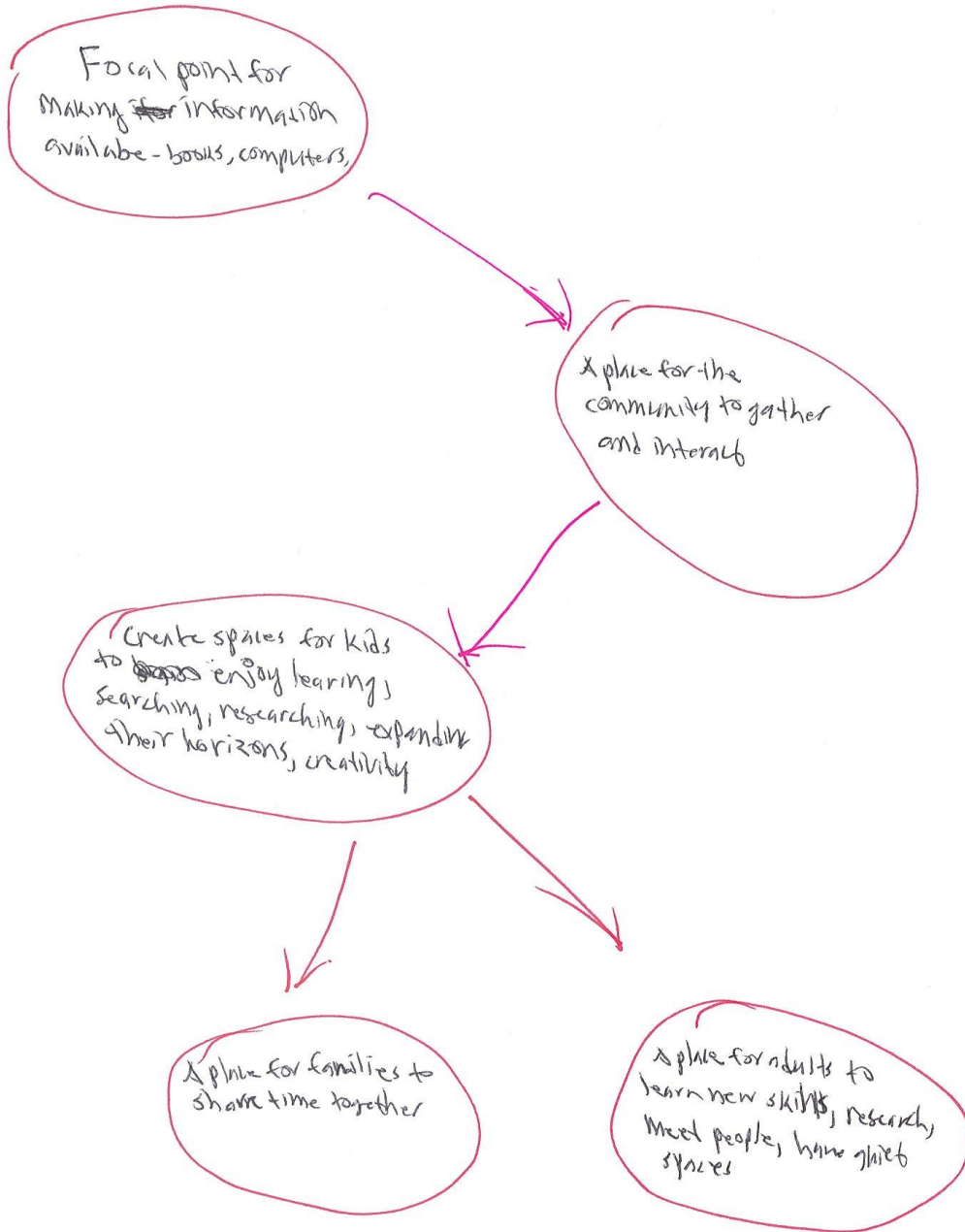
Event space

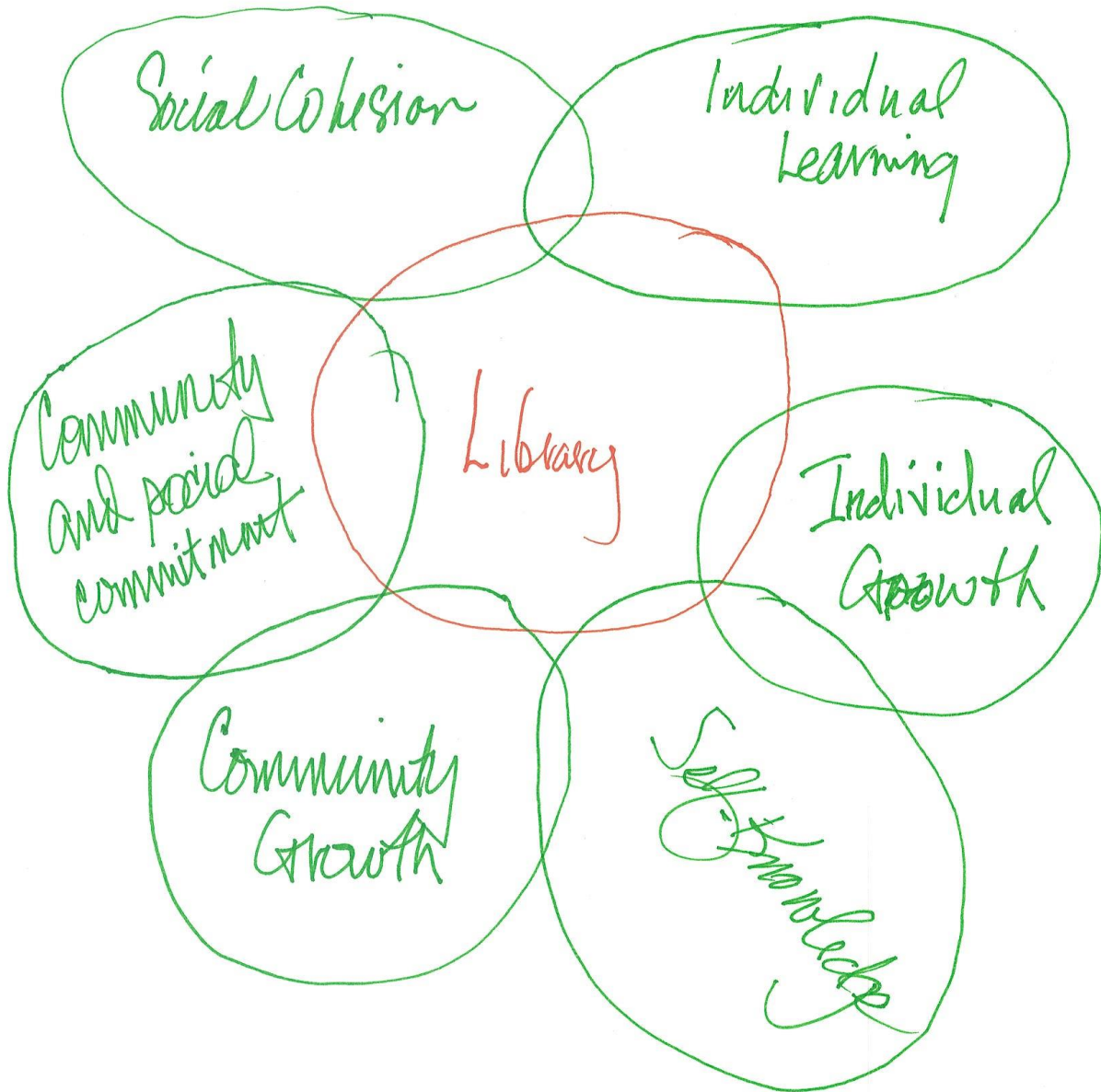
Community Meetings

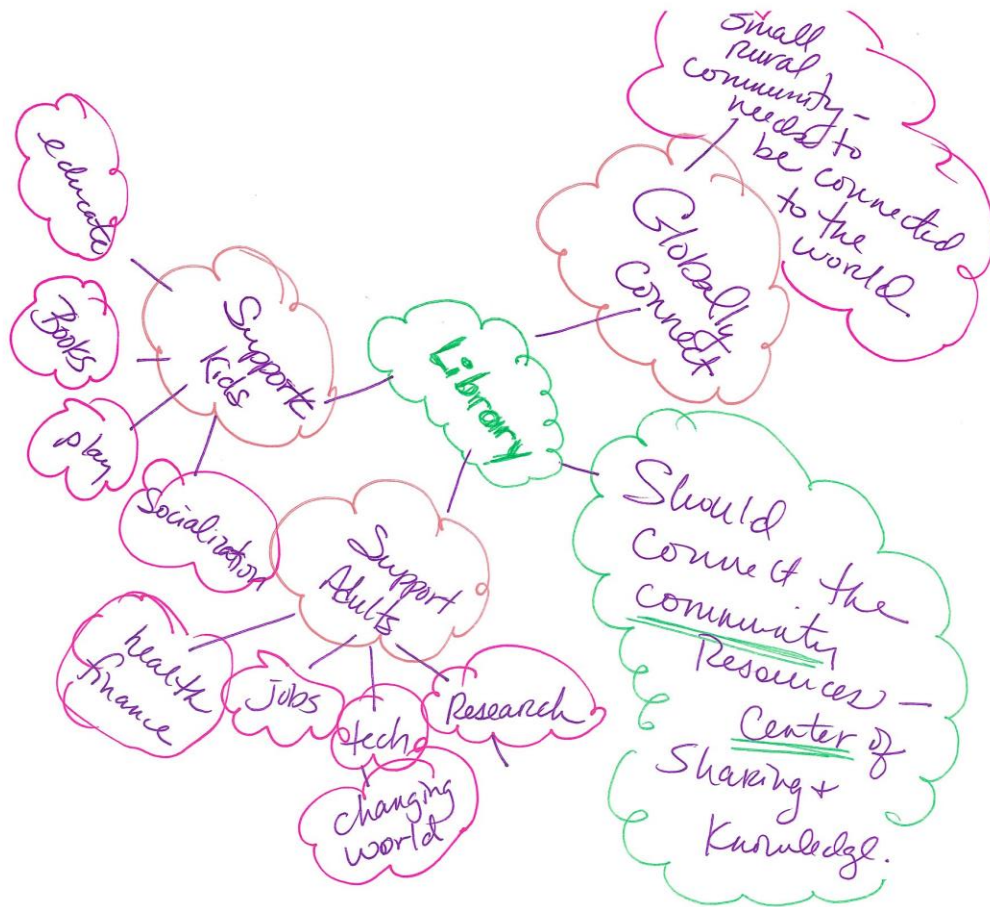
Non profit usage for meetings/events/seminars

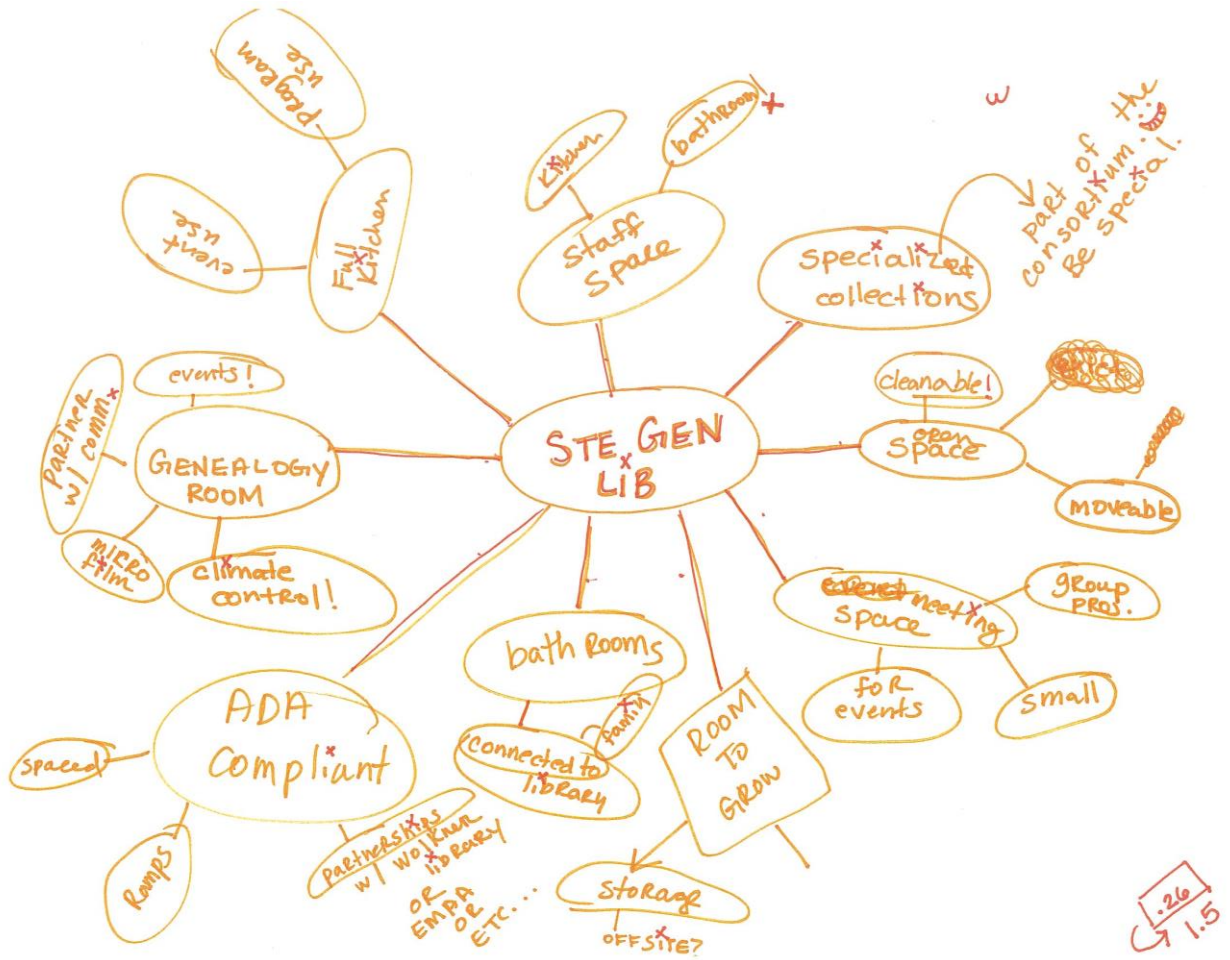


What are the services a library provide





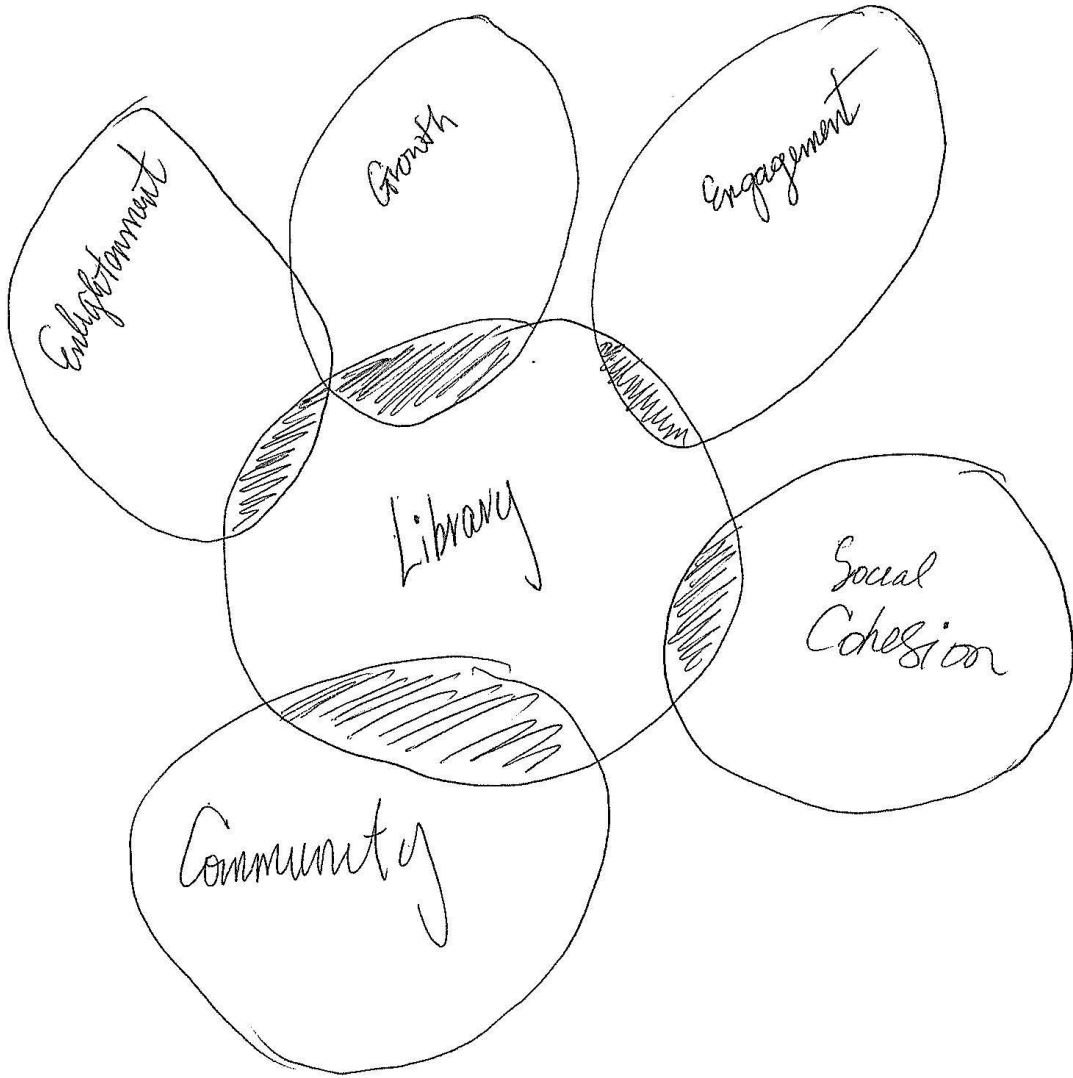




26
1.5



Space



*Past
Present
Future*

2 big issues: space & location

↓
Downtown-walking access.

Center ideas-

1. Crafting corner
2. Kids spot
3. Quiet spot-away from (computers, meeting rooms)
4. "Hang out" for teens who may not be interested in books, but need a safe place to socialize & hangout w/ friends.
5. Reading space w/ multiple seating options.

Nature combined w technology

to create life skills for
the future. Not just for
children but all generations -

Education / ^{IM} thinking / crafts →
Seminars (#)

VISUAL SCAN GENERAL NOTES

Community Member Participation: Visual Scan®

Among the most recent trends in libraries are the changing uses of spaces. To build consensus for the Ste. Genevieve Public Library, the strategy is to share the vision of “best practices” and to allow for an exchange of ideas. Aaron Cohen Associates (ACA) believes that this process provides an unbiased review of interior spaces. It is a visual review that helps us measure options to upgrade the facility.

Alexander Cohen, ACA consultant, and Jean Johnson, Library Board Member facilitated a series of focus groups. They engaged in a 1-hr workshops that included members of the library community. During the meetings, the community analyzed the library’s interior layout and exterior flow. They also discussed strategies to improve the library’s entrance and accessibility.

Overall, the Ste. Genevieve Public Library was graded as a “**C plus**” -- This means that a renovation of the library would make a great impact on the community. At minimum, the space plan needs to maximize the library’s square footage; add an additional meeting room and provide a conditioned environment for the friends of the library print collection storage. The low grade signifies that it is time to look at the building footprint holistically: create a space that complements Ste. Genevieve as a neighborhood library.

GENERAL NOTES FROM VISUAL SCANS

- A lot of use of term “we make do with what we have,” “little engine that could” etc. They do their best with existing but it is too small and needs improvement
- Much of the space is tiring, outdated, poor flow, poor HVAC and lighting, etc.
- OH BOY do they NOT want you to weed or cull the books ANYWHERE, EVER 😊

Community Comments Exterior:

- As noted, they are very attached to the charm and look of the area.
- Many did note that the charm outside does not extend to the interior.
- All seem to love the lawn.
- A lot of concerns about parking and pedestrian safety, also ADA compliance

Community Comments Interior:

- universal comments about how dated and ineffective space is.
- Many concerns about computers being too close to desk
- also comments about needing signage.
- A lot of notes about crowding, the word “chaotic” a lot

Children's Area:

- Many comments about programs in one space and books in another; also that it is crowded.
- The Children's area is constantly changing, starting in 2018 the space has grown to provide more activities and purpose for our littlest users.
- Also many comments about needing better teen space.

Reading Room:

- Mainly a concern that it is not suited for presentations and lectures: acoustics, crowding, inflexible furniture, and so on.

VISUAL SCAN DOCUMENTATION

Background of Visual Scan Focus Groups

Visual Scan Analysis: Enhancing Library Services and Space

The team conducted 3 Visual Scan sessions, each lasting between 1 to 2 hrs. These sessions involved participants from 2 to 6 community members/individuals per session. The discussions were often dynamic and interactive, with community members walking up to us as we discussed the library space plan. Opinions were coalescing around immediate ideas for improvements i.e. a New Entrance to the Library and/or Recreation Center.

The information gathered from these sessions has been meticulously analyzed and categorized into two main areas:

1. **Existing Conditions**
2. **Future Needs**

Existing Conditions

- **Physical Appearance and Space:** Assesses the current state of the library's physical space, including its layout, aesthetics, and accessibility.
- **Library Services:** Evaluates the current services offered, including traditional lending services, digital literacy programs, and online tools.

VISUAL SCAN 1

Visual Scan # 1 – June 10, 2024, 2pm

Visual Scan Summary with Library Board President

Current Spaces

- **Parking:** More parking available on the west side. Parking also available on the wings. Access to the library noted. (Grade: C-)
- **Vestibule:** Potential issues with changing to a door, no sidewalk, brick pavers, and wind issues with the patio idea. (Grade: B-)
- **Desk:** High and intimidating, cluttered with a lot of items. Holds are behind the desk, making it difficult for staff visibility. (Grade: C)
- **Parent Seating Area:** Non-keyed door, recommendation to modify the door outside of Storytime. (Grade: C)
- **Children's Library:** Remarkable improvement, considered excellent. (Grade: A)
- **Collections:** Fairly readable, staff actively weeding through it. (Grade: B)

Existing Spaces

- **General Conditions:** Hallways see significant traffic. The gym floor needs to be replaced, suggesting a drop ceiling for improvement. (Grade: C-)
- **Art and Ambiance:** Consider art on the wall, awning, and lights for better ambiance. (Grade: C-)
- **Expanded Amenities:** Suggestion to add hanging chairs, table and chair combo, and a large chess set for the veranda. Adding fans and creating a pathway to the library are also advised. (Grade: C-)
- **Work Area:** Additional computers needed during the summer, currently holds items behind the desk. Recommendations to streamline the workspace for better efficiency. (Grade: C)
- **Potential Developments:** Ideas include using ARPA money, creating a tree by local business, and expanding the space.

This examination highlights areas that need immediate improvement, as well as potential developments to enhance the functionality and aesthetic appeal of the library space.

VISUAL SCAN 2

Visual Scan # 2 – June 10, 2024, 4pm

Visual Scan Summary with Library Community Members

Current Spaces

- Building Access: Entry is through the sidedoor with minimal signage. There are multiple entrances, but the lack of clear directions is noted. (Grade: C)
- Courtyard: Detached from the library, the space is aesthetically pleasing but underutilized for both Library & Community Center use. (Grade: C)
- Vestibule: Community-focused staff positively impact this area. (Grade: B)
- Desk: High desk noted to be intimidating, especially for shorter individuals. The current setup blocks access and visibility, with museum items in the way. Potential for better book display space. (Grade: B)
- Welcome Seating Area: Functional, but specific details are not provided. (Unstated grade)

Existing Spaces

- General Conditions: The library is a secondary part of the community center. The idea of taking over the gym and improving signage from recreation center were discussed. (Grade: C)
- Children's Area: Engaging and fun environment for kids. (Grade: A)
- Veranda: Noted for its stage-like appearance, but improvement is needed for shading. (Grade: A)
- Cozy Seating: Provides a quiet space, reminiscent of an airport setting. Effective for those needing silence. (Grade: A)
- Art Guild Area: Excellent use of space, featuring puzzles and games donations. (Grade: A+)
- Archives: Many community members are unaware of the archives, though efforts to bring in exciting information are acknowledged. (Unstated grade)

This summary highlights strengths and areas for improvement, focusing on better utilization of existing spaces and enhancing community engagement through thoughtful design and functionality.

VISUAL SCAN 3

Visual Scan # 3 – June 11, 2024, 1:30pm

Visual Scan Summary with Library Community Members

Current Spaces

- Outdoor Entrance: Multiple entrance points lead to confusion; gym users different pathways in the center. The idea of better connection was discussed. (Grade: D)
- Porch: High porch with one set of steps, good view but lacks accessibility features. Clear need for better utilization and accessibility. (Grade: B)
- Children’s Area: Overly open and noisy, needs defined boundaries and a distinct identity. The current setup is too open for quiet activities. Previous attempts at outdoor story-time suggest space constraints. (Grade: C-)

Existing Spaces

- Green Space: Limited lacks steps or welcoming spaces connecting it to the building. Raised beds and seating like a college campus could improve usage. (Grade: C)
- Accessibility: Ramp needed on the opposite side; the current setup does not qualify for better accessibility standards. (Grade: C)
- Utilities and Funding: High costs and low tax base impact available funds for improvements. Reliance on community center funding adds complexity. (Grade: C-)
- Library and Community Center Relationship: Library closes when the Community Center does due to lack of independent entrance. Potential for a new entrance to enhance operation hrs. and accessibility. (Grade: B)

Future Needs and Ideas

- New Entrance: Increase curb appeal and make library operations independent of the Community Center. Suggestions for aesthetic improvements were discussed. (Grade: B)
- Children’s Area: Needs brighter colors, a defined theme, and redefined spaces for different age groups (children, teens). A podcasting studio was suggested. (Grade: C-)
- School Visits: Current resources are strained by large groups from schools. Suggestion to manage visits better and possibly expand facilities to handle groups. (Grade: C)
- Community Engagement: Ideas to create an outdoor space like a dog park or porch sitting area to attract more visitors. (Grade: B)
- Overall Space Management: Need for value addition through thoughtful changes that make the space more usable and attractive. (Grade: B)

This summary highlights areas for immediate attention and potential improvements, focusing on making the library more accessible, engaging, and better suited to community needs through practical and aesthetic enhancements.

PRE-DESIGN WORKSHOP

Workshop Overview

The pre-design workshop invited library staff and community members to actively participate in the planning process by using tracing paper to draw over existing library plans. This hands-on activity enabled collaborative and creative thinking to reimagine the library spaces.

Interactive Focus Groups:

We conducted two pre-design sessions, each lasting between 2 hrs and involving 3 groups with at least 3 participants per pre-design group.

- **Session Dynamics:** The sessions were dynamic and interactive, with community members often joining discussions as we walked through the library. Conversations centered around immediate ideas for improvements.
- **Key Insight:** There was a strong consensus on the need for a new entrance to the library and/or the Recreation Center.

Visualizing the Future.

- **We looked at the space and realigned services:**
 - Assessed the current state of the library's physical space, including layout, aesthetics, and accessibility.
 - Visualized the future of the library.
- **Library Services:**
 - Evaluated the existing services, including traditional lending services, digital literacy programs, and online tools.
 - Analyzed how to improve library services.

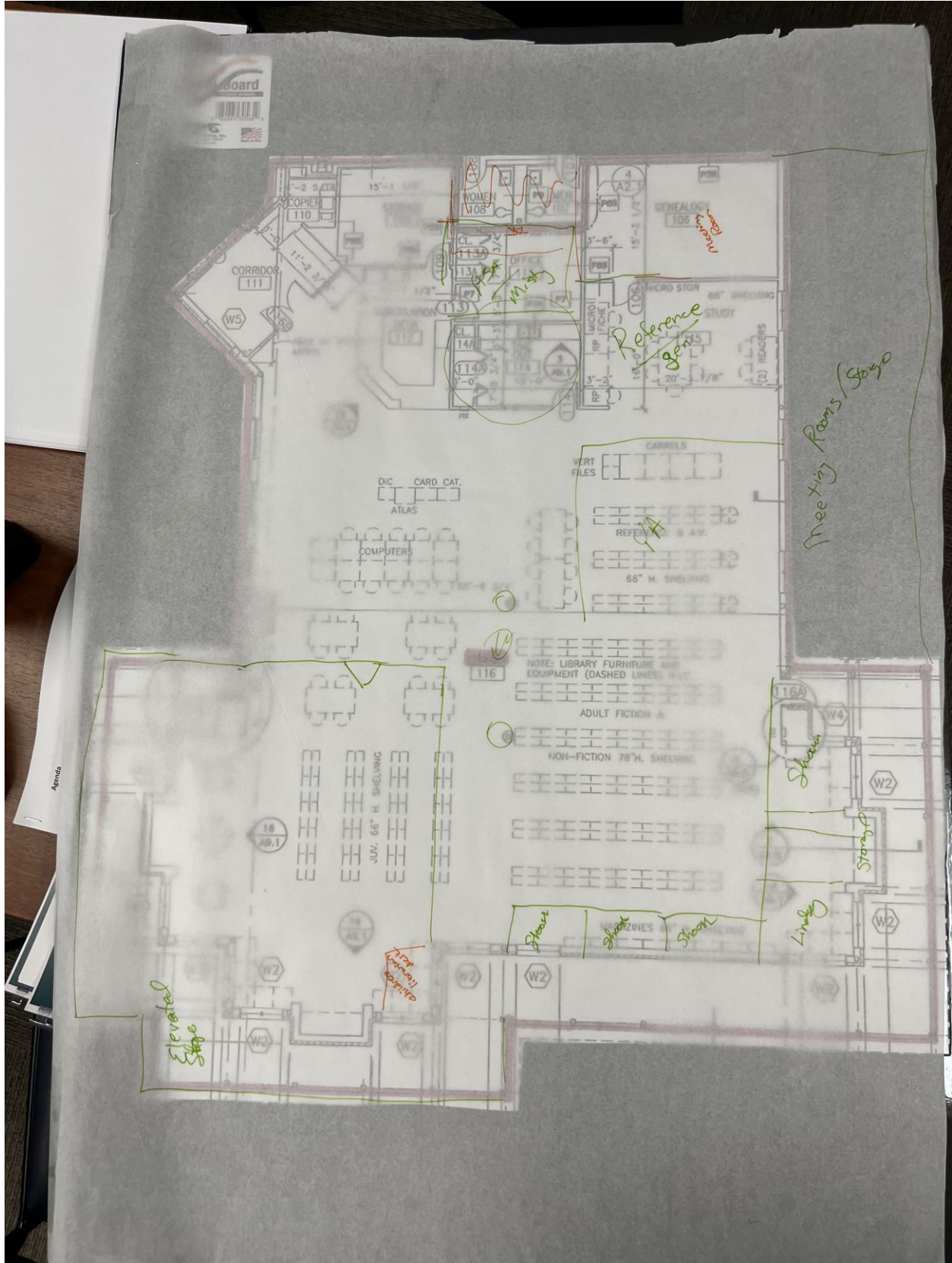
Future Needs

The pre-design workshops have generated a variety of sketches and design ideas aimed at improving the library space and services. These sketches, completed by library staff and community members, highlight potential configurations and enhancements that align with both the immediate and long-term needs of the library.

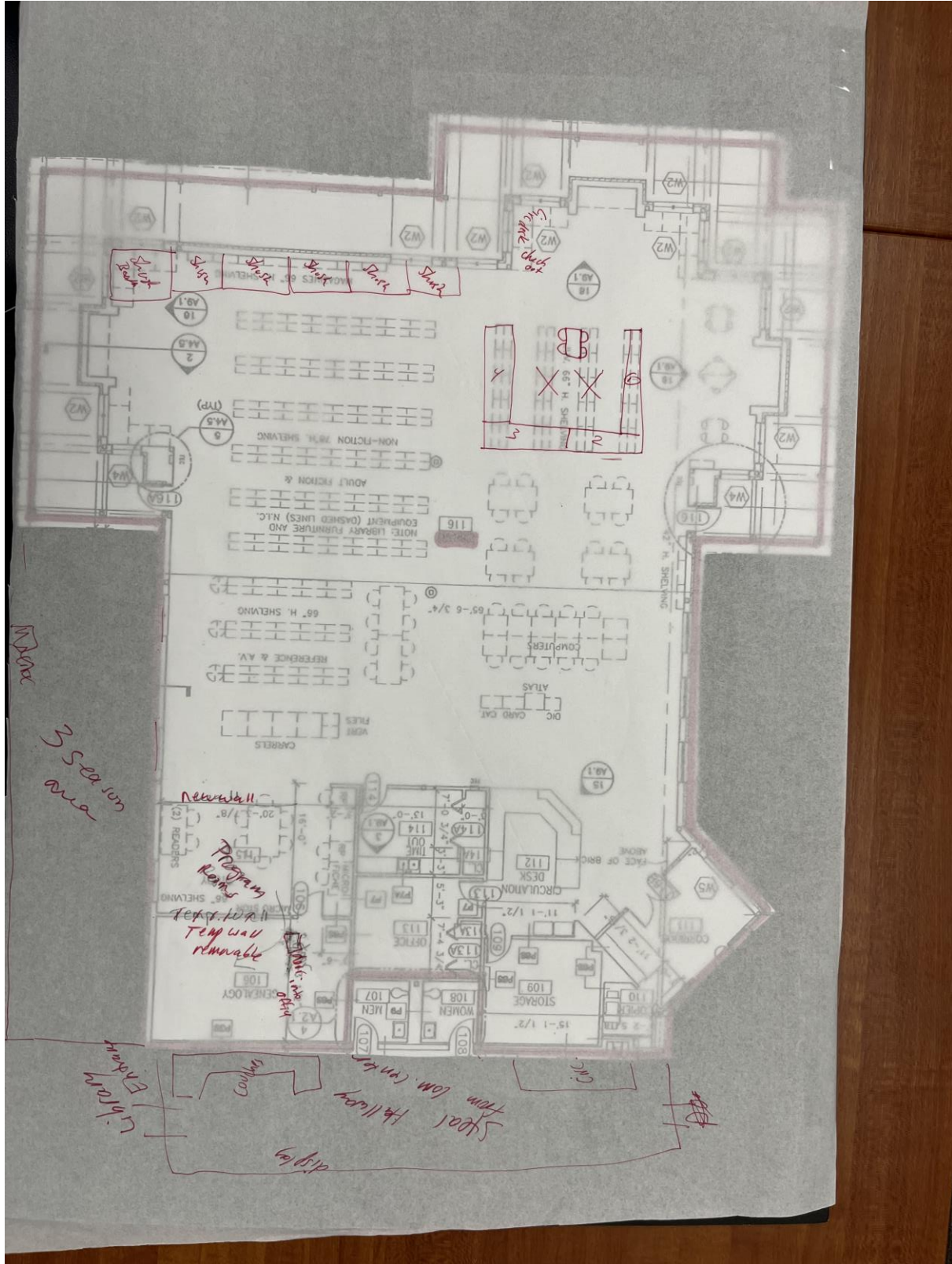
The following images encapsulate the collaborative efforts and valuable insights gained during the pre-design workshop, setting a solid foundation for the next steps in the library's improvement plan.

NOTE: the planning workshop illustrates that the library is too small. We could not provide a design that meets the needs of Ste. Genevieve County Public Library.

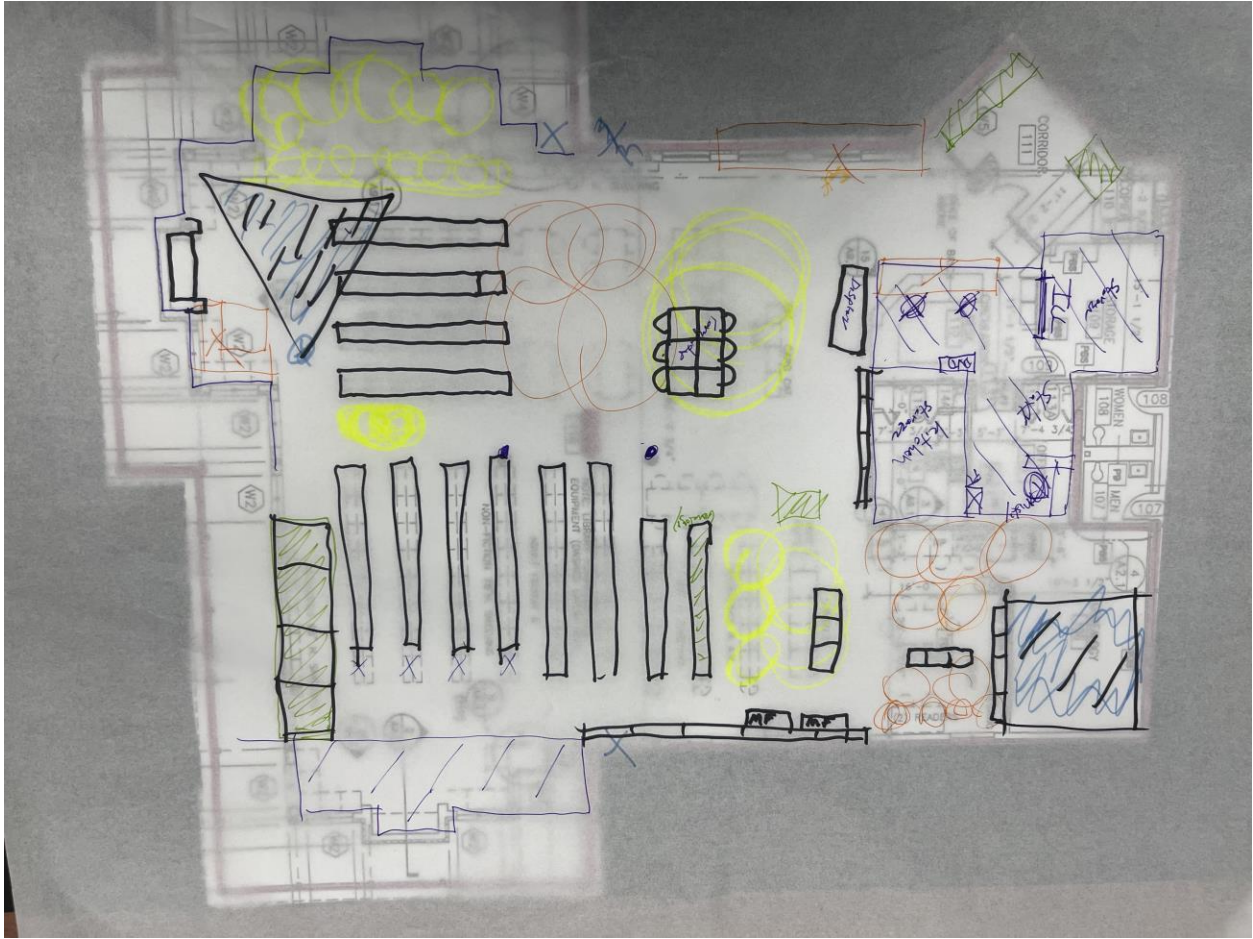
PRELIMINARY ANALYSIS
STE. GENEVIEVE COUNTY PUBLIC LIBRARY



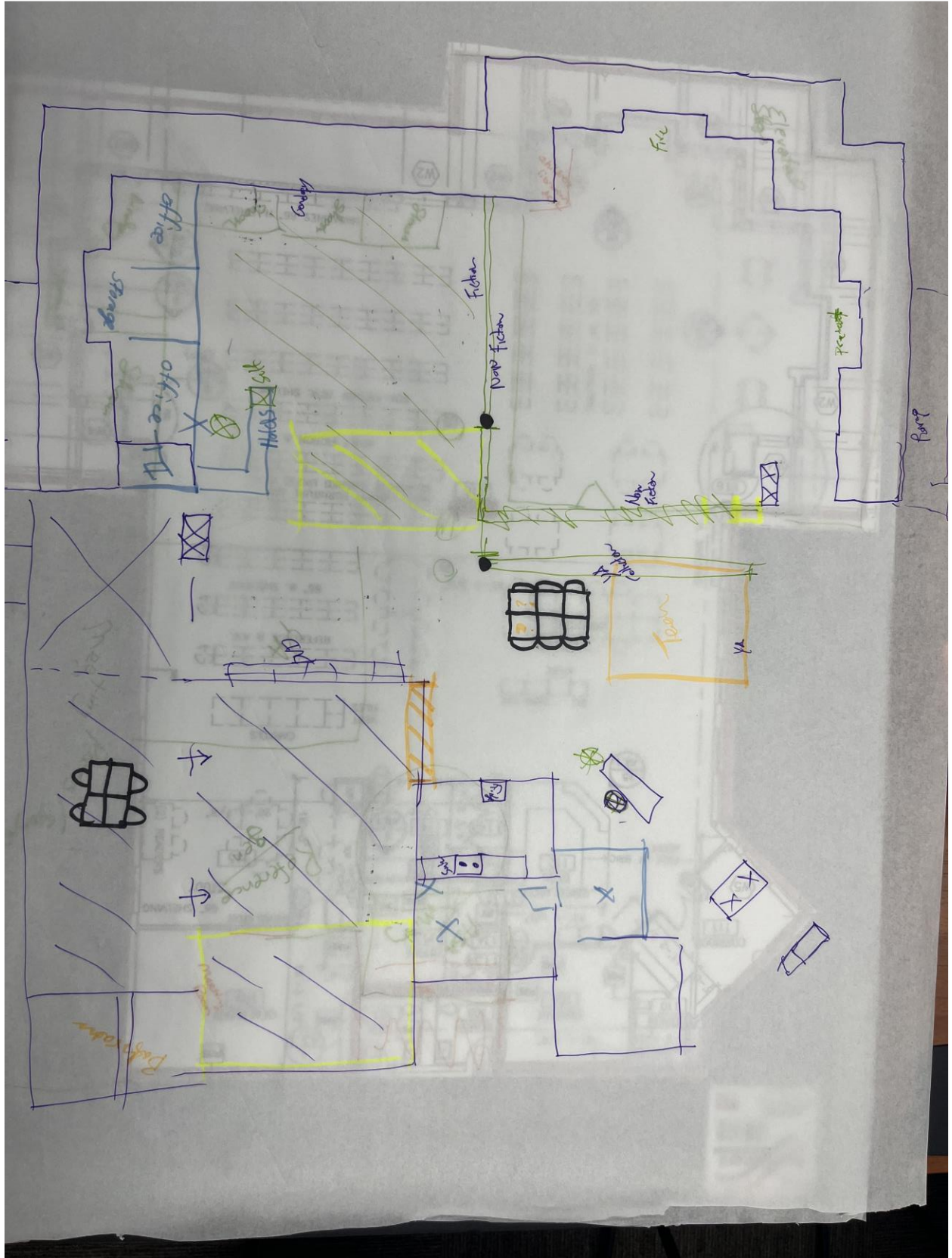
PRELIMINARY ANALYSIS
STE. GENEVIEVE COUNTY PUBLIC LIBRARY



PRELIMINARY ANALYSIS
STE. GENEVIEVE COUNTY PUBLIC LIBRARY



PRELIMINARY ANALYSIS
STE. GENEVIEVE COUNTY PUBLIC LIBRARY



PRELIMINARY ANALYSIS
STE. GENEVIEVE COUNTY PUBLIC LIBRARY



ALTERNATIVE LOCATIONS

In addition to the workshop and visual scans, the consultant explored other potential locations in Ste. Genevieve. We were analyzing how the County could provide the additional space required. This includes one sq. ft. per capita or target of Library space in Ste. Genevieve County. This will help us better understand the community context and to identify alternative spaces that could serve the library's evolving needs. Below are two sites that support the demands for library space and future growth. Starting projects now ensures cost-effectiveness, avoiding higher future expenses.

After numerous meetings, reviews, and assessments, it is our opinion that an additional space in the downtown area would help alleviate some of the concerns identified in our study. A downtown location would not only expand the library to the ideal size of 18,000 square feet but also facilitate access via walkability from two major schools located less than a mile from the proposed downtown site. This strategic placement would enhance community engagement and make library resources more accessible to young students and residents alike.

Additionally, considering a potential location in Bloomsdale could further extend our library's reach. A Bloomsdale branch would cater to the needs of that community segment, providing valuable services and resources locally. This dual expansion approach could significantly enhance the library's impact, ensuring it meets the growing and diverse needs of our community.

50 JEFFERSON STREET



55 3RD STREET

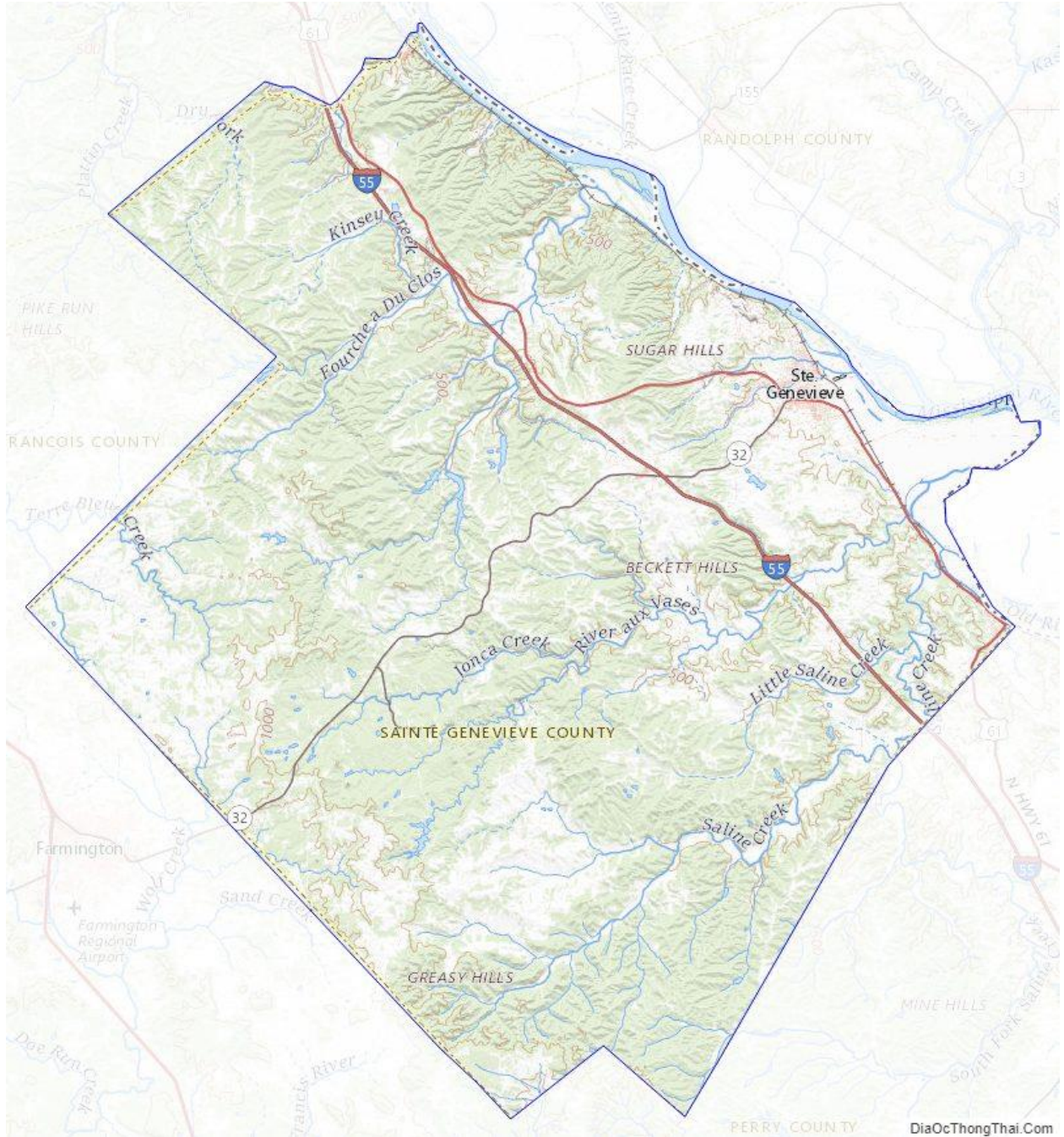


PRELIMINARY ANALYSIS
STE. GENEVIEVE COUNTY PUBLIC LIBRARY



COUNTY MAP; LIBRARY SERVICE AREA

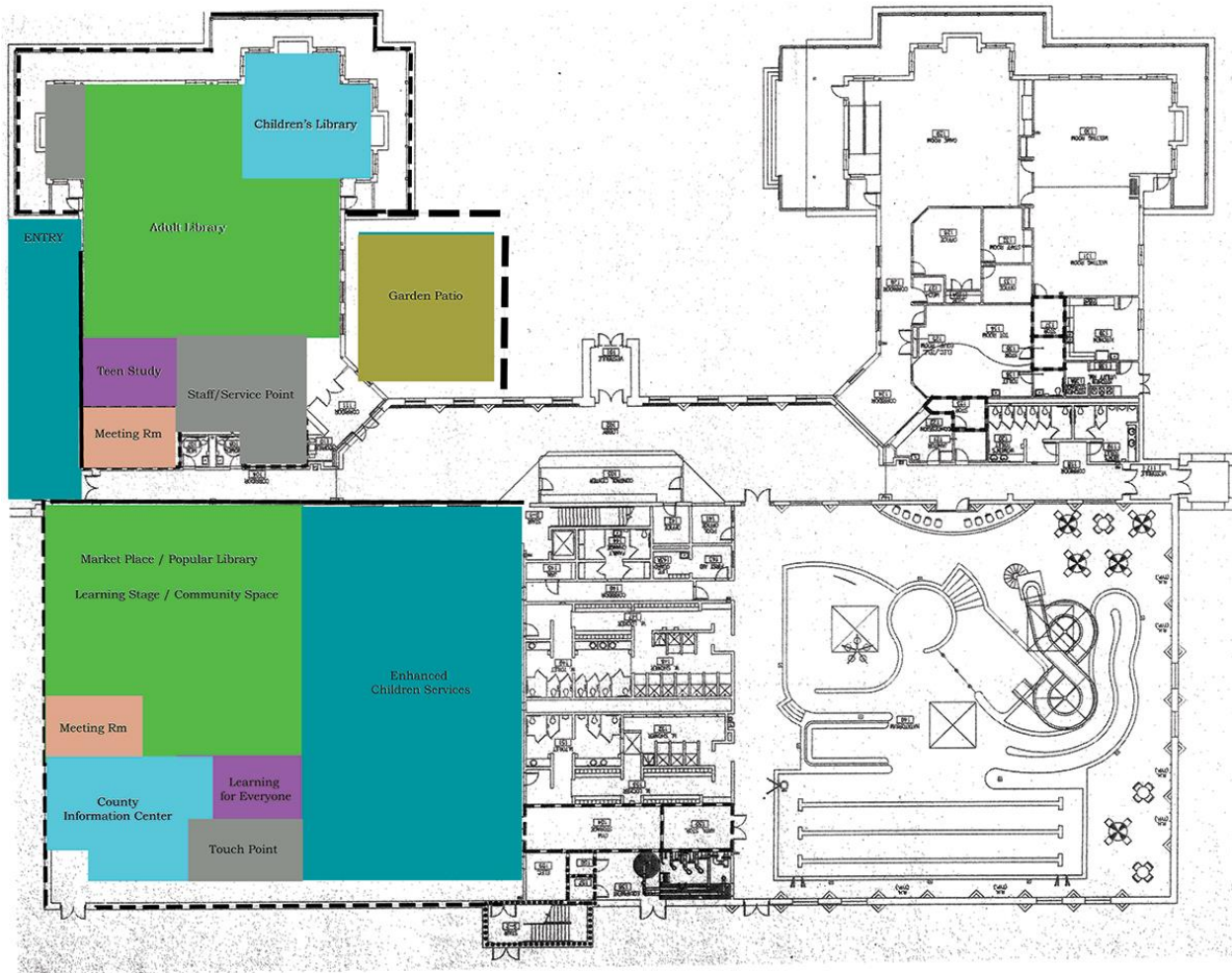
Total Library Service Area



Current Location of the Library



Library Service Option



- The library can add a patio in 0-18 months without a large budget.
- The library can invest in new meeting and collaborative spaces by using the building program to improve services.
- The community needs are equal to the Gym space in the Recreation Center.
- Additional funding is required to support current standards and provide independent learning opportunities.
- The existing library is too small for the community it serves.
- Public and Private support for the library is strategic. The more we leverage community spirit the greater the impact on education and preserving Ste. Genevieve's culture.